



Board of Commissioners
Regular Business Meeting
910 North Gary Avenue
Premier Room

November 10, 2025

6:00pm

1. Call To Order

2. Roll Call – Pledge of Allegiance

3. Listening Post

Anyone wishing to address the Board is asked to sign in. Please state your name and city for the record. The Board asks that you limit your comments to three minutes. If necessary, a response will be provided within 48 hours.

4. Changes or Additions to the Agenda

5. Consent Agenda

All items listed are included in the Consent Agenda. There will be no separate discussion of these items. Members of the public may petition in writing that an item be removed from the Consent Agenda.

- A. Approval: Regular Minutes: October 27, 2025
- B. Approval: Special Meeting Minutes: November 4, 2025
- C. Ratify: October 2025 Bills

6. Discussion Items

- A. Carol Stream Parks Foundation Update
- B. Dance, Gymnastics, and Theatre Programming
- C. Simkus Gym Floor Update
- D. Special Recreation Inclusion Task Force
- E. Capital Improvement Plan – Third Quarter 2025
- F. Proposed Organizational Goals for 2026
- G. Weekly Happenings (oral)

7. Action Items

- A. Approval: Resolution No. 25-07 - Estimation of Funds to be Raised by Taxation for the Year 2025

8. Closed Session

9. Action Pertaining to Closed Session

10. Adjournment



Board of Commissioners
Regular Meeting
October 27, 2025
6:00pm

Call to Order	President Jeffery called the meeting to order at 6:00 pm.								
Roll Call/Pledge of Allegiance	Present: Commissioners Jeffery, Parisi, Bird, Powers, Witteck, Becker, and Pauling. Staff: Executive Director Rini, Directors Hamilton, Bachewicz, Quinn, and Scumaci, and Executive Assistant Greninger.								
Listening Post	None								
Changes to the Agenda	None								
Consent Agenda	<p>Commissioner Powers made a motion to accept the consent agenda as read. Seconded by Commissioner Bird.</p> <p>A. Approval: Regular Minutes: October 14, 2025 Voice Vote. All in favor. None opposed. Motion Passes.</p> <p>Commissioner Bird made a motion to approve the consent agenda as read. Seconded by Commissioner Pauling.</p> <p>Roll Call Vote:</p> <table style="width: 100%;"> <tr> <td>Commissioner Bird: Aye</td><td>Commissioner Powers: Aye</td></tr> <tr> <td>Commissioner Becker: Aye</td><td>Commissioner Pauling: Aye</td></tr> <tr> <td>Commissioner Jeffery: Aye</td><td>Commissioner Witteck: Aye</td></tr> <tr> <td>Commissioner Parisi: Aye</td><td></td></tr> </table> <p>Motion Passes 7-0-0</p>	Commissioner Bird: Aye	Commissioner Powers: Aye	Commissioner Becker: Aye	Commissioner Pauling: Aye	Commissioner Jeffery: Aye	Commissioner Witteck: Aye	Commissioner Parisi: Aye	
Commissioner Bird: Aye	Commissioner Powers: Aye								
Commissioner Becker: Aye	Commissioner Pauling: Aye								
Commissioner Jeffery: Aye	Commissioner Witteck: Aye								
Commissioner Parisi: Aye									
Discussion Items	<p>A. Performance Against Goals - Q3 2025 Executive Director Rini reviewed the status of Third Quarter Goals. The acquisition of Charger Court is done. Papoose Tot lot lease expired but the Village of Carol Stream does not have a deed. There would be legal costs to clear up the paper trail and suggested we could contribute to the legal costs. Commissioner Powers asked her to find out how much it will cost. Executive Director Rini said the final reimbursement payment for the Walter Park OSLAD grant was approved, as was the advance payment for Pleasant Hill Park OSLAD grant. We had an IT intern who work 12 weeks during the summer, and we plan on doing that again in 2026.</p> <p>B. Weekly Happenings (oral)</p> <ul style="list-style-type: none"> Commissioner Witteck attended the Trick or Treat Trail at Red Hawk Park on Saturday. 								



	<ul style="list-style-type: none"> • Commissioner Witteck was contacted by a T-Ball coach, asking for a portable restroom for the little kids to use during practice at Town Center. • Commissioner Bird attended the IAPD Award Gala with Commissioner Jeffery, Executive Director Rini, and Village Trustees Anselmo and McCarthy. We won an award for Intergovernmental Cooperation with the Village of Carol Stream for our work on Community Park. 								
Action Items	<p>Andy Arndt from Meristem Advisors attended the meeting to answer questions about the Reimbursement Resolution and Bond Ordinances. A copy of each was provided to each Park Commissioner prior to the meeting and to everyone in attendance at said meeting who requested a copy. These ordinances are designed to lower rates and provide funding for capital improvements and repairs. Executive Director Rini added that by refinancing and issuing new bonds, we are providing for the future for our patron's recreational needs. The resolution allows us to be reimbursed for the Coral Cove Water Park and Simkus gym repair expenses, out of the new issuance.</p> <p>A. The President asked for a motion to approve the reimbursement resolution. Commissioner Bird made a motion to approve Resolution No. 25-06 expressing official intent regarding certain capital expenditures to be reimbursed from proceeds of an obligation to be issued by the Carol Stream Park District, DuPage County, Illinois. Seconded by Commissioner Witteck.</p> <p>Roll Call Vote:</p> <table> <tr> <td>Commissioner Bird: Aye</td><td>Commissioner Powers: Aye</td></tr> <tr> <td>Commissioner Becker Aye</td><td>Commissioner Pauling: Aye</td></tr> <tr> <td>Commissioner Jeffery: Aye</td><td>Commissioner Witteck: Aye</td></tr> <tr> <td>Commissioner Parisi: Aye</td><td></td></tr> </table> <p>Motion 7-0-0</p> <p>B. The President Asked for a motion to approve the refunding ordinance. Commissioner Witteck made a motion to approve Ordinance No. 592 - An Ordinance providing for the issue of not to exceed \$10,500,000 General Obligation Refunding Park Bonds, Series 2025A, of the Carol Stream Park District, DuPage County, Illinois, for the purpose of refunding certain outstanding bonds of said Park District, providing for the levy of a direct annual tax sufficient to pay the principal and interest on said bonds, and authorizing the proposed sale of said bonds to the purchaser thereof. Seconded by Commissioner Becker.</p> <p>Commissioner Powers noted the ordinance wording was confusion. Mr. Arndt said the Public Notice issued in the newspaper said up to \$3 million. That inflates the amounts in Ordinance 592 and 593. The Parameter Ordinances are set to allow flexibility, a little higher in interest rates and bond amount to give us flexibility to complete the transaction and provide the best savings to the district. Commissioner Powers asked about the escrow account. Mr. Arndt explained the escrow account allows the money from the sale of 2016 bonds to accrue interest until we purchase</p>	Commissioner Bird: Aye	Commissioner Powers: Aye	Commissioner Becker Aye	Commissioner Pauling: Aye	Commissioner Jeffery: Aye	Commissioner Witteck: Aye	Commissioner Parisi: Aye	
Commissioner Bird: Aye	Commissioner Powers: Aye								
Commissioner Becker Aye	Commissioner Pauling: Aye								
Commissioner Jeffery: Aye	Commissioner Witteck: Aye								
Commissioner Parisi: Aye									



the new bonds. Refunding the bonds and extending the debt a few years lowers taxpayer bills by approximately \$6 per year.

Roll Call Vote:

Commissioner Bird: Aye
Commissioner Becker Aye
Commissioner Jeffery: Aye
Commissioner Parisi: Aye

Commissioner Powers: No
Commissioner Pauling: Aye
Commissioner Witteck: Aye

Motion 6-1-0

C. The President asked for a motion to approve the park bonds ordinance. Commissioner Bird made a motion to approve Ordinance No. 593 – An Ordinance providing for the issue of not to exceed \$1,500,000 General Obligation Limited Tax Park Bonds, Series 2025B, and not to exceed \$2,000,000 Taxable General Obligation Limited Tax Refunding Park Bonds, Series 2025C, of the Carol Stream Park District, DuPage County, Illinois, for the payment of land condemned or purchased for parks, for the building, maintaining, improving and protecting of the same and the existing land and facilities said Park District and for the payment of the expenses incident thereto, for the purpose of refunding certain outstanding bonds of said Park District, providing for the levy of a direct annual tax to pay the principal and interest on said bonds, and authorizing the sale of said bonds to the purchaser thereof. Seconded by Commissioner Pauling.

Mr. Arndt explained that this Parameter Ordinance allows us to sell bonds to get the \$1.5 million for the repairs and capital projects the Board discussed. Commissioner Witteck said she understands the process now. Commissioner Pauling said there is much work to do in our parks order to generate additional revenue. Commissioner Bird said he trusts our financial advisors in guiding us through this process. Commissioner Becker agreed that we have experts in their fields working with us. Mr. Arndt will return to a future meeting with an update as we progress through the timeline.

Roll Call Vote:

Commissioner Bird: Aye
Commissioner Becker Aye
Commissioner Jeffery: Aye
Commissioner Parisi: Aye

Commissioner Powers: No
Commissioner Pauling: Aye
Commissioner Witteck: Aye

Motion 6-1-0

A. Ratify: Treasurers Report – Third Quarter 2025

Director Scumaci reviewed the highlights from the third quarter Treasurers Report. Commissioner Jeffery asked about the expenses on chart B1. Director Scumaci said that number was low for the third quarter, but a big bond payment for \$5,000,000 was issued this quarter, which will be reflected on the fourth quarter report. Commissioner Becker asked about the Fountain View rentals being at 80% of budget. Director Scumaci said that is really good for the third quarter. Average revenue



	<p>should be at 75% of budget. Commissioner Jeffery reflected there will probably be more rentals indoors in the coming months.</p> <p>Commissioner Powers made a motion to ratify the Treasurers Report from the Third Quarter 2025. Seconded by Commissioner Parisi. Voice Vote. All in favor. None opposed. Motion Passes.</p> <p>B. Approval: Appointment of IAPD Conference Delegates</p> <p>Commissioners discussed the Business Meeting scheduled on January 31, 2026 and selected delegates. There is only one Business meeting a year. Commissioner Powers said he finds it very interesting. Commissioner Jeffery noticed the wording includes staff could be appointed as the delegate or alternates.</p> <p>Commissioner Bird made a motion to appoint Commissioner Becker as the Delegate. Commissioner Witteck as 1st Alternate, Commissioner Parisi as 2nd Alternate, and Director Hamilton as 3rd Alternative. Seconded by Commissioner Pauling. Voice Vote. All in favor, none opposed. Motion passes.</p>
Closed Session	None
Action Pertaining to Closed Session	None
Adjournment	Commissioner Powers made a motion to adjourn the meeting. Seconded by Commissioner Witteck. Voice Vote taken. Motion passed 7-0-0. Meeting adjourned at 7:23 pm.

President
Jacqueline Jeffery

Secretary
Sue Rini

November 10, 2025
Date



**Board of Commissioners
Special Meeting
Ribbon Cutting
Pleasant Hill Park
November 4, 2025
4:00pm**

1. Call to Order	Executive Director Rini called the meeting to order at 4:00 pm.
2. Roll Call	Present: Commissioners: Parisi, Bird, Powers, Becker and Pauling. Staff: Executive Director Rini, Directors Bachewicz, Hamilton, Quinn and Scumaci, Superintendents Adamson and Anderson, Division Manager Kenny, and multiple staff.
3. Welcome	Board Vice President Parisi welcomed all who attended the event, and thanked our partners including District 200 Board Member Rutledge, Dr. Schuler, and Principal Boger, and KC Alimento from Senator Lewis' office. Multiple staff from District 200 were also in attendance. Snacks and water were distributed, and numerous children and families were present, with the children playing on the new equipment.
Adjournment	The meeting was adjourned 4:45 pm.

President
Jacqueline Jeffery

Secretary
Sue Rini

November 10, 2025
Date

Motion:

Make a motion to ratify bills as presented in the Accounts Payable Board Report for October.

Gisa Scumaci
(Treasurer)

11/5/2025
(Date)

Carol Stream Park District
Accounts October 2025

Presented to the Board
November 10, 2025

VENDOR SORT KEY	DATE	DESCRIPTION	FUND	DEPARTMENT	AMOUNT
ACCESS ONE INC.	10/24/25	DATTO 10/25	CORPORATE FUND	FINANCE/ADMINISTRATION	<u>1,386.50</u>
				TOTAL:	1,386.50
ACTION LOCK & KEY, INC.	10/10/25	COMM PARK LOCK REPLACED	CORPORATE FUND	PARKS	<u>2,883.62</u>
				TOTAL:	2,883.62
AAHW LLC	10/03/25	TRACTOR REPAIR	CORPORATE FUND	PARKS	<u>505.73</u>
				TOTAL:	505.73
AIRGAS NATIONAL CARBONATION	10/10/25	CCWP CO2 TANK INSPECTION	RECREATION FUND	CORAL COVE	858.00
	10/10/25	CO2 TANK INSPECT-NOT AUTH	RECREATION FUND	CORAL COVE	<u>858.00-</u>
				TOTAL:	0.00
ALL STAR SPORTS	10/24/25	Soccer Jr. -CP #33517	RECREATION FUND	RECREATION	175.00
	10/24/25	Basketball Jr. #33143	RECREATION FUND	RECREATION	800.00
	10/24/25	Basketball Jr. #33145	RECREATION FUND	RECREATION	900.00
	10/24/25	Basketball Skills #33146	RECREATION FUND	RECREATION	400.00
	10/24/25	Discount 70/30	RECREATION FUND	RECREATION	<u>609.00-</u>
				TOTAL:	1,666.00
AMERICAN LEAK DETECTION	10/17/25	CCWP LEAK DETECTION	RECREATION FUND	CORAL COVE	<u>1,500.00</u>
				TOTAL:	1,500.00
ANCEL GLINK PC	10/31/25	LEGAL SVC 9/1-9/30/25	CORPORATE FUND	FINANCE/ADMINISTRATION	<u>1,121.25</u>
				TOTAL:	1,121.25
ANDERSON, TERESA	10/10/25	COOKIE DECORATING AUG 25	RECREATION FUND	RECREATION	<u>360.00</u>
				TOTAL:	360.00
AUTOMATED LOGIC	10/03/25	REMOTE SUPPORT	RECREATION FUND	FOUNTAIN VIEW REC CENT	380.00
	10/17/25	GEO REMOTE SUPPORT	RECREATION FUND	FOUNTAIN VIEW REC CENT	<u>380.00</u>
				TOTAL:	760.00
BARN OWL INC.	10/17/25	Hay Bale Rental	RECREATION FUND	RECREATION	<u>67.50</u>
				TOTAL:	67.50
BASILINE YOUTH SPORTS, INC.	10/31/25	Umpires	RECREATION FUND	RECREATION	6,500.00
	10/31/25	Umpires	RECREATION FUND	RECREATION	<u>600.00</u>
				TOTAL:	7,100.00
BELLAS PIZZA LLC	10/10/25	September Pizzas	RECREATION FUND	RECREATION	<u>236.00</u>
				TOTAL:	236.00
BENJAMIN SCHOOL DIST. 25	10/10/25	Evergreen IGA 10/25	RECREATION FUND	EVERGREEN GYM FACILITY	16.85
	10/10/25	Evergreen IGA 10/25	RECREATION FUND	EVERGREEN GYM FACILITY	83.07
	10/10/25	Evergreen IGA 10/25	RECREATION FUND	EVERGREEN GYM FACILITY	801.05
	10/10/25	Evergreen IGA 9/25	RECREATION FUND	EVERGREEN GYM FACILITY	16.85
	10/10/25	Evergreen IGA 9/25	RECREATION FUND	EVERGREEN GYM FACILITY	83.07
	10/10/25	Evergreen IGA 9/25	RECREATION FUND	EVERGREEN GYM FACILITY	<u>801.05</u>
				TOTAL:	1,801.94
BITTER, JAMES JAY	10/24/25	10/13-10/17 ADULT VOLLEYBA	RECREATION FUND	RECREATION	210.00
	10/10/25	10/3 ADULT VOLLEYBALL	RECREATION FUND	RECREATION	120.00
	10/10/25	10/4 YTH VOLLEYBALL	RECREATION FUND	RECREATION	120.00
	10/24/25	10/6-10/10 ADULT VOLLEYBAL	RECREATION FUND	RECREATION	210.00
	10/10/25	9/26 ADULT VOLLEYBALL	RECREATION FUND	RECREATION	120.00

VENDOR SORT KEY	DATE	DESCRIPTION	FUND	DEPARTMENT	AMOUNT
	10/10/25	9/29 ADULT VOLLEYBALL	RECREATION FUND	RECREATION	<u>90.00</u>
				TOTAL:	870.00
BRONZE MEMORIAL CO.	10/31/25	MALTIZO DEDICATION PLAQUE	CORPORATE FUND	PARKS	<u>50.00</u>
				TOTAL:	50.00
CAROL STREAM PARK DISTRIC	10/31/25	FLEX BENEFITS-MEDICAL	CORPORATE FUND	NON-DEPARTMENTAL	405.47
	10/31/25	FLEX BENEFITS-MEDICAL	CORPORATE FUND	NON-DEPARTMENTAL	405.47
	10/31/25	FLEX BENEFITS-MEDICAL	RECREATION FUND	NON-DEPARTMENTAL	157.01
	10/31/25	FLEX BENEFITS-MEDICAL	RECREATION FUND	NON-DEPARTMENTAL	157.01
	10/31/25	FLEX BENEFITS-MEDICAL	SPECIAL RECREATION	NON-DEPARTMENTAL	6.35
	10/31/25	FLEX BENEFITS-MEDICAL	SPECIAL RECREATION	NON-DEPARTMENTAL	<u>6.35</u>
				TOTAL:	1,137.66
CASH	10/03/25	ROTARY DINNER-SR	CORPORATE FUND	FINANCE/ADMINISTRATION	25.00
	10/03/25	GR RIVER SUPPLIES	CORPORATE FUND	FINANCE/ADMINISTRATION	21.45
	10/03/25	FVRC CABINET KEYS	CORPORATE FUND	FINANCE/ADMINISTRATION	7.60
	10/03/25	KEYS-GARBAGE/PREM	CORPORATE FUND	FINANCE/ADMINISTRATION	10.50
	10/03/25	SCARCE-SUPPLIES	CORPORATE FUND	FINANCE/ADMINISTRATION	10.00
	10/03/25	SCARCE-SUPPLIES	CORPORATE FUND	FINANCE/ADMINISTRATION	10.00
	10/03/25	PS-CINCO DE MAYO	RECREATION FUND	NON-DEPARTMENTAL	18.00
	10/03/25	CHRISTMAS- PS	RECREATION FUND	RECREATION	8.80
	10/03/25	KEYS- EPIC CAMP	RECREATION FUND	RECREATION	12.87
	10/03/25	POPCORN-DOC	RECREATION FUND	RECREATION	<u>9.38</u>
				TOTAL:	133.60
COM ED	10/24/25	FV ELECTRIC 8/21-9/22	RECREATION FUND	FOUNTAIN VIEW REC CENT	21,532.17
	10/24/25	ELEC 8/21-9/22	RECREATION FUND	SIMKUS FACILITY	5,519.37
	10/24/25	ELEC 8/21-9/22	RECREATION FUND	CORAL COVE	<u>682.17</u>
				TOTAL:	27,733.71
CONSERV FS, INC.	10/03/25	QUICK DRY FOR FIELDS	CORPORATE FUND	PARKS	1,080.00
	10/17/25	GRASS SEED	CORPORATE FUND	PARKS	<u>6,980.00</u>
				TOTAL:	8,060.00
CRAMER MARKETING	10/10/25	2025 W2's/1099 NEC's	CORPORATE FUND	FINANCE/ADMINISTRATION	<u>431.80</u>
				TOTAL:	431.80
PADDOCK PUBLICATIONS, INC	10/10/25	PH FOR BOND ISSUE 9/22	CORPORATE FUND	FINANCE/ADMINISTRATION	<u>64.40</u>
				TOTAL:	64.40
ROBERTO R. DANIEL JR	10/10/25	EVENT PHOTOGRAPHY	CORPORATE FUND	MARKETING/COMMUNICATIO	<u>70.00</u>
				TOTAL:	70.00
DIRECT FITNESS SOLUTIONS LLC.	10/03/25	Wipes	RECREATION FUND	RECREATION	516.00
	10/03/25	Prevenative Maintenance	RECREATION FUND	RECREATION	2,795.00
	10/17/25	PM repairs	RECREATION FUND	RECREATION	671.15
	10/31/25	Repair Assessment	RECREATION FUND	RECREATION	<u>75.00</u>
				TOTAL:	4,057.15
ALEX DISERIO	10/31/25	Payout	RECREATION FUND	RECREATION	<u>350.00</u>
				TOTAL:	350.00
DOMINO'S	10/24/25	September Pizza	RECREATION FUND	CONCESSIONS	218.91
	10/24/25	September Pizza	RECREATION FUND	CONCESSIONS	<u>36.99</u>
				TOTAL:	255.90

VENDOR SORT KEY	DATE	DESCRIPTION	FUND	DEPARTMENT	AMOUNT
DOTY & SONS	10/03/25	Phill Game Tables	CAPITAL IMPROVEMEN	CAPITAL IMPROVEMENT FU	<u>4,555.00</u>
				TOTAL:	4,555.00
TERRY ESCALLIER	10/10/25	Bar Set	RECREATION FUND	NON-DEPARTMENTAL	<u>300.00</u>
				TOTAL:	300.00
EXPRESS NORTHWEST MARKETS INC	10/10/25	McCaslin Mini Melts	RECREATION FUND	CONCESSIONS	296.40
	10/10/25	McCaslin Mini Melts	RECREATION FUND	CONCESSIONS	362.20
	10/24/25	McCaslin Mini Melts	RECREATION FUND	CONCESSIONS	<u>240.00</u>
				TOTAL:	898.60
WILLIAM FINCH	10/31/25	Payout	RECREATION FUND	RECREATION	<u>100.00</u>
				TOTAL:	100.00
FLEXIBLE BENEFIT SRV CRP	10/03/25	Flex Claims Paid Sep 2025	CORPORATE FUND	NON-DEPARTMENTAL	450.93
	10/24/25	FLEX OCTOBER 2025	CORPORATE FUND	FINANCE/ADMINISTRATION	<u>75.00</u>
				TOTAL:	525.93
FOX VALLEY FIRE & SAFETY CO.	10/24/25	FIRE ALARM SERVICE	RECREATION FUND	SIMKUS FACILITY	1,272.00
	10/24/25	FIRE ALARM SERVICE	RECREATION FUND	SIMKUS FACILITY	741.50
	10/24/25	FIRE ALARM SERVICE	RECREATION FUND	MINIATURE GOLF	<u>484.50</u>
				TOTAL:	2,498.00
THE FUN ONES MOONJUMP INC	10/03/25	Bounce House Rental	RECREATION FUND	RECREATION	<u>365.75</u>
				TOTAL:	365.75
GAME TIME	10/17/25	MCCASLIN PLAYGROUND REPAI	CORPORATE FUND	PARKS	<u>244.91</u>
				TOTAL:	244.91
GATLIN PLUMBING & HEATING, INC	10/24/25	CLIMACOOOL ADJMTS	RECREATION FUND	FOUNTAIN VIEW REC CENT	891.50
	10/24/25	GEOTHERMAL REPAIR	RECREATION FUND	FOUNTAIN VIEW REC CENT	1,170.00
	10/24/25	MAIN POOL HEATER REPAIR	RECREATION FUND	FOUNTAIN VIEW REC CENT	370.00
	10/10/25	CCWP MOTOR REPAIR	RECREATION FUND	CORAL COVE	509.00
	10/24/25	MCCASLIN FREEZER	RECREATION FUND	MCCASLIN FIELDS	<u>1,991.88</u>
				TOTAL:	4,932.38
GLENBARD NORTH HIGH SCHOOL	10/03/25	Summer Theatre Rental	RECREATION FUND	RECREATION	<u>5,170.00</u>
				TOTAL:	5,170.00
DAN GREGORY	10/31/25	Payout	RECREATION FUND	RECREATION	<u>250.00</u>
				TOTAL:	250.00
GUARDIAN	10/31/25	10/25 OPT LIFE PREM-LC	CORPORATE FUND	NON-DEPARTMENTAL	5.03
	10/31/25	10/25 OPT LIFE PREM-CM	CORPORATE FUND	NON-DEPARTMENTAL	7.06
	10/31/25	10/25 OPT LIFE PREM-SR	CORPORATE FUND	NON-DEPARTMENTAL	6.59
	10/31/25	VOLUNTARY LIFE PREMIUM	CORPORATE FUND	NON-DEPARTMENTAL	39.57
	10/31/25	VOLUNTARY LIFE PREMIUM	CORPORATE FUND	NON-DEPARTMENTAL	39.57
	10/31/25	VOLUNTARY LIFE PREMIUM	CORPORATE FUND	NON-DEPARTMENTAL	72.57
	10/31/25	VOLUNTARY LIFE PREMIUM	CORPORATE FUND	NON-DEPARTMENTAL	72.57
	10/31/25	10/25 OPT LIFE PREM-MA	RECREATION FUND	NON-DEPARTMENTAL	0.87
	10/31/25	10/25 OPT LIFE PREM-LC	RECREATION FUND	NON-DEPARTMENTAL	2.15
	10/31/25	10/25 OPT LIFE PREM-SR	RECREATION FUND	NON-DEPARTMENTAL	2.83
	10/31/25	VOLUNTARY LIFE PREMIUM	RECREATION FUND	NON-DEPARTMENTAL	19.40
	10/31/25	VOLUNTARY LIFE PREMIUM	RECREATION FUND	NON-DEPARTMENTAL	19.40
	10/31/25	VOLUNTARY LIFE PREMIUM	RECREATION FUND	NON-DEPARTMENTAL	12.93
	10/31/25	VOLUNTARY LIFE PREMIUM	RECREATION FUND	NON-DEPARTMENTAL	12.93

VENDOR SORT KEY	DATE	DESCRIPTION	FUND	DEPARTMENT	AMOUNT
	10/31/25	10/25 OPT LIFE PREM-MA	SPECIAL RECREATION	NON-DEPARTMENTAL	0.05
	10/31/25	VOLUNTARY LIFE PREMIUM	SPECIAL RECREATION	NON-DEPARTMENTAL	3.11
	10/31/25	VOLUNTARY LIFE PREMIUM	SPECIAL RECREATION	NON-DEPARTMENTAL	<u>3.11</u>
		TOTAL:			319.74
SHANE HAMILTON	10/03/25	CCWP-BUCKET WELD REIMB	RECREATION FUND	CORAL COVE	60.00
	10/03/25	CCWP BUCKET WELDING	RECREATION FUND	CORAL COVE	60.00
	10/03/25	CCWP BUCKET WELDING	RECREATION FUND	CORAL COVE	<u>60.00-</u>
		TOTAL:			60.00
HITCHCOCK DESIGN GROUP	10/24/25	Pleasant Hill FinalDesign	CAPITAL IMPROVEMEN	CAPITAL IMPROVEMENT FU	6,410.00
	10/24/25	PH FinalDesign-Reimb	CAPITAL IMPROVEMEN	CAPITAL IMPROVEMENT FU	<u>66.00</u>
		TOTAL:			6,476.00
HOT SHOTS SPORTS LLC	10/31/25	Adult Tot Soccer #33294	RECREATION FUND	RECREATION	420.00
	10/31/25	Pee Wee Soccer #33296	RECREATION FUND	RECREATION	270.00
	10/31/25	Pee Wee Flag Foot #33399	RECREATION FUND	RECREATION	630.00
	10/31/25	Jr. Flag Football #33400	RECREATION FUND	RECREATION	450.00
	10/31/25	Discount 70/30	RECREATION FUND	RECREATION	<u>531.00-</u>
		TOTAL:			1,239.00
HURLBUT ATHLETICS	10/10/25	EVAL & COACH CLINIC	RECREATION FUND	RECREATION	250.00
	10/10/25	Volleyball Trainings	RECREATION FUND	RECREATION	<u>392.00</u>
		TOTAL:			642.00
IL DEPT OF REV	10/10/25	STATE WITHHOLDING	CORPORATE FUND	NON-DEPARTMENTAL	2,420.91
	10/24/25	STATE WITHHOLDING	CORPORATE FUND	NON-DEPARTMENTAL	2,424.60
	10/10/25	STATE WITHHOLDING	RECREATION FUND	NON-DEPARTMENTAL	5,858.61
	10/24/25	STATE WITHHOLDING	RECREATION FUND	NON-DEPARTMENTAL	5,645.38
	10/10/25	STATE WITHHOLDING	SPECIAL RECREATION	NON-DEPARTMENTAL	23.47
	10/24/25	STATE WITHHOLDING	SPECIAL RECREATION	NON-DEPARTMENTAL	<u>23.47</u>
		TOTAL:			16,396.44
ILL DEPT OF REVENUE	10/24/25	PGM Sales Tax	RECREATION FUND	NON-DEPARTMENTAL	805.53
	10/24/25	CCMG Sales Tax	RECREATION FUND	NON-DEPARTMENTAL	23.84
	10/24/25	CC Conc Sales Tax	RECREATION FUND	NON-DEPARTMENTAL	35.95
	10/24/25	MCC Sales Tax	RECREATION FUND	NON-DEPARTMENTAL	3,244.94
	10/24/25	FV Conc Sales Tax	RECREATION FUND	NON-DEPARTMENTAL	37.62
	10/24/25	CC Conc Sales Tax Disc	RECREATION FUND	CONCESSIONS	0.95-
	10/24/25	MCC Sales Tax Disc	RECREATION FUND	CONCESSIONS	56.94-
	10/24/25	FV Conc Sales Tax Disc	RECREATION FUND	CONCESSIONS	0.62-
	10/24/25	PGM Sales Tax Disc	RECREATION FUND	RECREATION	13.53-
	10/24/25	CCMG Sales Tax Disc	RECREATION FUND	RECREATION	<u>0.84-</u>
		TOTAL:			4,075.00
IL MUNICIPAL RETIREMENT	10/31/25	MONTHLY IMRF CONTRIBUTION	CORPORATE FUND	NON-DEPARTMENTAL	2,212.24
	10/31/25	MONTHLY IMRF CONTRIBUTION	CORPORATE FUND	NON-DEPARTMENTAL	2,255.59
	10/31/25	IMRF VOLUNTARY ADD'L CONT.	CORPORATE FUND	NON-DEPARTMENTAL	1,098.27
	10/31/25	IMRF VOLUNTARY ADD'L CONT.	CORPORATE FUND	NON-DEPARTMENTAL	1,098.68
	10/31/25	IMRF ROUNDING ADJ 10/25	CORPORATE FUND	ANCILLARY FUNDS	0.01-
	10/31/25	MONTHLY IMRF CONTRIBUTION	CORPORATE FUND	ANCILLARY FUNDS	12,405.60
	10/31/25	MONTHLY IMRF CONTRIBUTION	CORPORATE FUND	ANCILLARY FUNDS	12,454.59
	10/31/25	MONTHLY IMRF CONTRIBUTION	RECREATION FUND	NON-DEPARTMENTAL	2,966.72
	10/31/25	MONTHLY IMRF CONTRIBUTION	RECREATION FUND	NON-DEPARTMENTAL	2,943.90
	10/31/25	IMRF VOLUNTARY ADD'L CONT.	RECREATION FUND	NON-DEPARTMENTAL	656.39
	10/31/25	IMRF VOLUNTARY ADD'L CONT.	RECREATION FUND	NON-DEPARTMENTAL	656.56

VENDOR SORT KEY	DATE	DESCRIPTION	FUND	DEPARTMENT	AMOUNT
	10/31/25	MONTHLY IMRF CONTRIBUTION	SPECIAL RECREATION	NON-DEPARTMENTAL	23.74
	10/31/25	MONTHLY IMRF CONTRIBUTION	SPECIAL RECREATION	NON-DEPARTMENTAL	23.74
	10/31/25	IMRF VOLUNTARY ADD'L CONT.	SPECIAL RECREATION	NON-DEPARTMENTAL	17.62
	10/31/25	IMRF VOLUNTARY ADD'L CONT.	SPECIAL RECREATION	NON-DEPARTMENTAL	<u>17.62</u>
				TOTAL:	38,831.25
IL OFFICE OF THE STATE	10/03/25	ADA LIFT INSPECTION	RECREATION FUND	SIMKUS FACILITY	<u>75.00</u>
				TOTAL:	75.00
INTERNAL REVENUE SERVICE	10/10/25	FEDERAL WITHHOLDING	CORPORATE FUND	NON-DEPARTMENTAL	4,756.13
	10/24/25	FEDERAL WITHHOLDING	CORPORATE FUND	NON-DEPARTMENTAL	4,805.64
	10/10/25	FICA WITHHOLD	CORPORATE FUND	NON-DEPARTMENTAL	3,263.26
	10/24/25	FICA WITHHOLD	CORPORATE FUND	NON-DEPARTMENTAL	3,264.65
	10/10/25	MEDICARE WITHHOLDING	CORPORATE FUND	NON-DEPARTMENTAL	763.18
	10/24/25	MEDICARE WITHHOLDING	CORPORATE FUND	NON-DEPARTMENTAL	763.46
	10/10/25	FICA WITHHOLD	CORPORATE FUND	ANCILLARY FUNDS	11,321.59
	10/24/25	FICA WITHHOLD	CORPORATE FUND	ANCILLARY FUNDS	11,059.15
	10/10/25	MEDICARE WITHHOLDING	CORPORATE FUND	ANCILLARY FUNDS	2,647.84
	10/24/25	MEDICARE WITHHOLDING	CORPORATE FUND	ANCILLARY FUNDS	2,586.48
	10/10/25	FEDERAL WITHHOLDING	RECREATION FUND	NON-DEPARTMENTAL	7,127.29
	10/24/25	FEDERAL WITHHOLDING	RECREATION FUND	NON-DEPARTMENTAL	6,900.24
	10/10/25	FICA WITHHOLD	RECREATION FUND	NON-DEPARTMENTAL	8,026.15
	10/24/25	FICA WITHHOLD	RECREATION FUND	NON-DEPARTMENTAL	7,762.32
	10/10/25	MEDICARE WITHHOLDING	RECREATION FUND	NON-DEPARTMENTAL	1,877.13
	10/24/25	MEDICARE WITHHOLDING	RECREATION FUND	NON-DEPARTMENTAL	1,815.49
	10/10/25	FEDERAL WITHHOLDING	SPECIAL RECREATION	NON-DEPARTMENTAL	80.59
	10/24/25	FEDERAL WITHHOLDING	SPECIAL RECREATION	NON-DEPARTMENTAL	80.59
	10/10/25	FICA WITHHOLD	SPECIAL RECREATION	NON-DEPARTMENTAL	32.18
	10/24/25	FICA WITHHOLD	SPECIAL RECREATION	NON-DEPARTMENTAL	32.18
	10/10/25	MEDICARE WITHHOLDING	SPECIAL RECREATION	NON-DEPARTMENTAL	7.53
	10/24/25	MEDICARE WITHHOLDING	SPECIAL RECREATION	NON-DEPARTMENTAL	<u>7.53</u>
				TOTAL:	78,980.60
JEFF ELLIS MANAGEMENT LLC	10/03/25	FVRC POOL MAINT 10/25	RECREATION FUND	FOUNTAIN VIEW REC CENT	3,994.48
	10/03/25	Aquatic Mgmt 10/25	RECREATION FUND	RECREATION	35,918.78
	10/10/25	Jr. Lifeguard Camp	RECREATION FUND	RECREATION	1,080.00
	10/10/25	Discount	RECREATION FUND	RECREATION	408.00-
	10/10/25	Jr. Lifeguard Camp	RECREATION FUND	RECREATION	<u>280.00</u>
				TOTAL:	40,865.26
KONICA MINOLTA	10/10/25	COPIERS 9/18-10/17	CORPORATE FUND	FINANCE/ADMINISTRATION	197.00
	10/10/25	COPIERS 8/20/25-9/19/25	CORPORATE FUND	FINANCE/ADMINISTRATION	<u>1,506.54</u>
				TOTAL:	1,703.54
LANDSCAPE MATERIAL	10/31/25	TOPSOIL	CORPORATE FUND	PARKS	<u>92.00</u>
				TOTAL:	92.00
LANDWORKS LTD	10/24/25	Phill General Contractor	CORPORATE FUND	ANCILLARY FUNDS	90,000.00
	10/24/25	Phill General Contractor	CAPITAL IMPROVEMEN	CAPITAL IMPROVEMENT FU	45,389.98
	10/24/25	Phill General Contractor	CASH IN LIEU	CASH IN LIEU	<u>32,282.00</u>
				TOTAL:	167,671.98
LUMOS HOLDINGS US ACQUISTION CO.	10/03/25	Punching Bag Hardware	RECREATION FUND	RECREATION	<u>115.28</u>
				TOTAL:	115.28
RICHARD MCCLOUD	10/24/25	10/10 ADULT VOLLEYBALL	RECREATION FUND	RECREATION	60.00

VENDOR SORT KEY	DATE	DESCRIPTION	FUND	DEPARTMENT	AMOUNT
	10/24/25	10/17 ADULT VOLLEYBALL	RECREATION FUND	RECREATION	90.00
	10/10/25	10/3 ADULT VOLLEYBALL	RECREATION FUND	RECREATION	60.00
	10/10/25	10/3 ADULT VOLLEYBALL	RECREATION FUND	RECREATION	<u>120.00</u>
				TOTAL:	330.00
MENARDS	10/03/25	LARGE COVER FOR SHUT OFFS	RECREATION FUND	CORAL COVE	<u>21.98</u>
				TOTAL:	21.98
MISC	DAVID J SABATHNE	10/03/25 DAVID J SABATHNE: REFUND	RECREATION FUND	NON-DEPARTMENTAL	200.00
	MCFFL	10/10/25 MCFFL: REFUND	RECREATION FUND	NON-DEPARTMENTAL	100.00
	GLEN ELLYN PARK DISTRI	10/10/25 GLEN ELLYN PARK DISTRICT:	RECREATION FUND	NON-DEPARTMENTAL	250.00
	CHRISTINA KERWIN	10/31/25 CHRISTINA KERWIN: REFUND	RECREATION FUND	NON-DEPARTMENTAL	100.00
	SLOW PITCH SB ASSN	10/10/25 SLOW PITCH SB ASSN: REFUND	RECREATION FUND	NON-DEPARTMENTAL	500.00
	CHICAGO CHURCH OF CHRI	10/10/25 CHICAGO CHURCH OF CHRIST:	RECREATION FUND	NON-DEPARTMENTAL	250.00
	BRETT SOPKO	10/24/25 BRETT SOPKO: REFUND	RECREATION FUND	NON-DEPARTMENTAL	<u>85.00</u>
				TOTAL:	1,485.00
NAMEPLATE & PANEL TECH	10/03/25	MEMORIAL TREE PLAQUE	CORPORATE FUND	PARKS	<u>43.50</u>
				TOTAL:	43.50
NATIONWIDE RETIREMENT	10/10/25	DEFERRED COMPENSATION	CORPORATE FUND	NON-DEPARTMENTAL	280.00
	10/24/25	DEFERRED COMPENSATION	CORPORATE FUND	NON-DEPARTMENTAL	280.00
	10/10/25	DEFERRED COMPENSATION	RECREATION FUND	NON-DEPARTMENTAL	75.00
	10/24/25	DEFERRED COMPENSATION	RECREATION FUND	NON-DEPARTMENTAL	75.00
	10/10/25	DEFERRED COMPENSATION	SPECIAL RECREATION	NON-DEPARTMENTAL	15.00
	10/24/25	DEFERRED COMPENSATION	SPECIAL RECREATION	NON-DEPARTMENTAL	<u>15.00</u>
				TOTAL:	740.00
NCSI	10/17/25	SEPTEMBER BACKGROUND CKS	CORPORATE FUND	ANCILLARY FUNDS	<u>228.00</u>
				TOTAL:	228.00
NORTHERN IL WINTER SWIM CONF.	10/24/25	NISC SWIM Winter Dues	RECREATION FUND	RECREATION	<u>550.00</u>
				TOTAL:	550.00
NuTOYS LEISURE PRODUCTS, INC	10/17/25	ARMSTRONG PLAYGROUND	CORPORATE FUND	PARKS	558.54
	10/10/25	Phill-Athletic/Furn Supp	CAPITAL IMPROVEMEN	CAPITAL IMPROVEMENT FU	<u>22,102.00</u>
				TOTAL:	22,660.54
MICHAEL J OCHS	10/10/25	9/26 ADULT VOLLEYBALL	RECREATION FUND	RECREATION	<u>60.00</u>
				TOTAL:	60.00
OFFICIAL FINDERS LLC	10/10/25	10U Travel SB - Ump	RECREATION FUND	RECREATION	320.00
	10/10/25	11U Tavel SB - Ump	RECREATION FUND	RECREATION	320.00
	10/10/25	12U Travel SB - Ump	RECREATION FUND	RECREATION	640.00
	10/10/25	13U Travel SB - Ump	RECREATION FUND	RECREATION	240.00
	10/10/25	14U Travel SB - Ump	RECREATION FUND	RECREATION	480.00
	10/10/25	16U Travel SB - Ump	RECREATION FUND	RECREATION	80.00
	10/10/25	13U Travel BB - Ump	RECREATION FUND	RECREATION	240.00
	10/10/25	14U Travel BB - Ump	RECREATION FUND	RECREATION	400.00
	10/10/25	10U SB - Ump	RECREATION FUND	RECREATION	240.00
	10/10/25	HS SB - Ump	RECREATION FUND	RECREATION	320.00
	10/10/25	HS SB - Ump	RECREATION FUND	RECREATION	40.00
	10/10/25	10U BB - Ump	RECREATION FUND	RECREATION	400.00
	10/10/25	10U BB - Ump	RECREATION FUND	RECREATION	40.00
	10/10/25	12U BB - Ump	RECREATION FUND	RECREATION	400.00
	10/10/25	14U BB - Ump	RECREATION FUND	RECREATION	40.00

VENDOR SORT KEY	DATE	DESCRIPTION	FUND	DEPARTMENT	AMOUNT
	10/10/25	HS BB - Ump	RECREATION FUND	RECREATION	160.00
	10/10/25	U8 Soccer - Ref	RECREATION FUND	RECREATION	105.00
	10/10/25	U8 Soccer - Ref	RECREATION FUND	RECREATION	30.00
	10/10/25	U10 Soccer - Ref	RECREATION FUND	RECREATION	120.00
	10/10/25	10U Travel SB - Ump	RECREATION FUND	RECREATION	240.00
	10/10/25	11U Travel SB - Ump	RECREATION FUND	RECREATION	400.00
	10/10/25	12U Travel SB - Ump	RECREATION FUND	RECREATION	640.00
	10/10/25	13U Travel SB - Ump	RECREATION FUND	RECREATION	400.00
	10/10/25	14U Travel SB - Ump	RECREATION FUND	RECREATION	480.00
	10/10/25	16U Travel SB - Ump	RECREATION FUND	RECREATION	400.00
	10/10/25	10U BB - Ump	RECREATION FUND	RECREATION	320.00
	10/10/25	12U BB - Ump	RECREATION FUND	RECREATION	40.00
	10/10/25	12U BB - Ump	RECREATION FUND	RECREATION	400.00
	10/10/25	10U SB - Ump	RECREATION FUND	RECREATION	160.00
	10/10/25	14U SB - Ump	RECREATION FUND	RECREATION	40.00
	10/10/25	13U Travel BB - Ump	RECREATION FUND	RECREATION	480.00
	10/10/25	14U Travel BB - Ump	RECREATION FUND	RECREATION	560.00
	10/10/25	HS BB - Ump	RECREATION FUND	RECREATION	160.00
	10/10/25	HS SB - Ump	RECREATION FUND	RECREATION	320.00
	10/10/25	U8 Soccer - Ref	RECREATION FUND	RECREATION	140.00
	10/10/25	U10 Soccer - Ref	RECREATION FUND	RECREATION	160.00
	10/10/25	U12 Soccer - Ref	RECREATION FUND	RECREATION	80.00
	10/10/25	U14 Soccer - Ref	RECREATION FUND	RECREATION	90.00
	10/31/25	12U BB - Ump	RECREATION FUND	RECREATION	480.00
	10/31/25	10U BB - Ump	RECREATION FUND	RECREATION	400.00
	10/31/25	14U BB - Ump	RECREATION FUND	RECREATION	160.00
	10/31/25	14U Travel BB - Ump	RECREATION FUND	RECREATION	640.00
	10/31/25	13U Travel BB - Ump	RECREATION FUND	RECREATION	400.00
	10/31/25	11U Travel SB - Ump	RECREATION FUND	RECREATION	240.00
	10/31/25	13U Travel SB - Ump	RECREATION FUND	RECREATION	320.00
	10/31/25	12U Travel SB - Ump	RECREATION FUND	RECREATION	640.00
	10/31/25	14U Travel SB - Ump	RECREATION FUND	RECREATION	640.00
	10/31/25	10U Travel SB - Ump	RECREATION FUND	RECREATION	400.00
	10/31/25	16U Travel HS SB - Ump	RECREATION FUND	RECREATION	480.00
	10/31/25	10U SB - Ump	RECREATION FUND	RECREATION	160.00
	10/31/25	14U SB - Ump	RECREATION FUND	RECREATION	160.00
	10/31/25	16U HS SB - Ump	RECREATION FUND	RECREATION	160.00
	10/31/25	12U Soccer - Ref	RECREATION FUND	RECREATION	120.00
	10/31/25	10U Soccer - Ref	RECREATION FUND	RECREATION	120.00
	10/31/25	11U Travel SB - Ump	RECREATION FUND	RECREATION	400.00
	10/31/25	10U Travel SB - Ump	RECREATION FUND	RECREATION	160.00
	10/31/25	13U Travel SB - Ump	RECREATION FUND	RECREATION	480.00
	10/31/25	14U Travel SB - Ump	RECREATION FUND	RECREATION	720.00
	10/31/25	12U Travel SB - Ump	RECREATION FUND	RECREATION	640.00
	10/31/25	16U Travel HS SB - Ump	RECREATION FUND	RECREATION	480.00
	10/31/25	16U HS BB - Ump	RECREATION FUND	RECREATION	160.00
	10/31/25	12U BB - Ump	RECREATION FUND	RECREATION	320.00
	10/31/25	10U BB - Ump	RECREATION FUND	RECREATION	480.00
	10/31/25	8U BB - Ump	RECREATION FUND	RECREATION	80.00
	10/31/25	14U BB - Ump	RECREATION FUND	RECREATION	160.00
	10/31/25	14U Travel BB - Ump	RECREATION FUND	RECREATION	560.00
	10/31/25	13U Travel BB - Ump	RECREATION FUND	RECREATION	240.00
	10/31/25	8U Soccer - Ref	RECREATION FUND	RECREATION	280.00
	10/31/25	12U Soccer - Ref	RECREATION FUND	RECREATION	80.00
	10/31/25	10U Soccer - Ref	RECREATION FUND	RECREATION	120.00
	10/31/25	14U Soccer - Ref	RECREATION FUND	RECREATION	90.00

VENDOR SORT KEY	DATE	DESCRIPTION	FUND	DEPARTMENT	AMOUNT
	10/31/25	12U SB - Ump	RECREATION FUND	RECREATION	80.00
	10/31/25	16U HS SB - Ump	RECREATION FUND	RECREATION	80.00
	10/31/25	10U SB - Ump	RECREATION FUND	RECREATION	80.00
	10/31/25	14U SB - Ump	RECREATION FUND	RECREATION	80.00
	10/31/25	16U HS SB - Ump	RECREATION FUND	RECREATION	160.00
	10/31/25	12U Travel SB - Ump	RECREATION FUND	RECREATION	400.00
	10/31/25	14U Travel SB - Ump	RECREATION FUND	RECREATION	320.00
	10/31/25	11U Travel SB - Ump	RECREATION FUND	RECREATION	240.00
	10/31/25	13U Travel SB - Ump	RECREATION FUND	RECREATION	240.00
	10/31/25	10U Travel SB - Ump	RECREATION FUND	RECREATION	240.00
	10/31/25	16U Travel HS SB - Ump	RECREATION FUND	RECREATION	480.00
	10/31/25	10U BB - Ump	RECREATION FUND	RECREATION	320.00
	10/31/25	12U BB - Ump	RECREATION FUND	RECREATION	320.00
	10/31/25	14U BB - Ump	RECREATION FUND	RECREATION	80.00
	10/31/25	13U Travel BB - Ump	RECREATION FUND	RECREATION	240.00
	10/31/25	14U Travel BB - Ump	RECREATION FUND	RECREATION	320.00
	10/31/25	12U Volleyball - Ref	RECREATION FUND	RECREATION	45.00
	10/31/25	8U Soccer - Ref	RECREATION FUND	RECREATION	140.00
	10/31/25	10U Soccer - Ref	RECREATION FUND	RECREATION	40.00
	10/31/25	12U Soccer - Ref	RECREATION FUND	RECREATION	120.00
	10/31/25	14U Soccer - Ref	RECREATION FUND	RECREATION	<u>45.00</u>
		TOTAL:			25,165.00
PARKREATION, INC.	10/24/25	Phill-Cantilever Shades	CAPITAL IMPROVEMEN	CAPITAL IMPROVEMENT FU	21,176.00
	10/24/25	Phill-Cantilever Shades	CAPITAL IMPROVEMEN	CAPITAL IMPROVEMENT FU	<u>9.00-</u>
		TOTAL:			21,167.00
PCARD - FIFTH THIRD BANK	10/31/25	FIRE ALRM 10/1-12/31 SRC	CORPORATE FUND	ANCILLARY FUNDS	252.00
	10/31/25	FIRE ALRM 10/1-12/31 MB	CORPORATE FUND	ANCILLARY FUNDS	252.00
	10/31/25	GOOGLE STE LAPTOPS 10/25	CORPORATE FUND	FINANCE/ADMINISTRATION	16.73
	10/31/25	24 AAA- 28 AA BATTERIES	CORPORATE FUND	FINANCE/ADMINISTRATION	38.77
	10/31/25	IPHONE 16E CASE-LS	CORPORATE FUND	FINANCE/ADMINISTRATION	13.99
	10/31/25	PHONE LOC E911 9/16-10/15	CORPORATE FUND	FINANCE/ADMINISTRATION	35.93
	10/31/25	SR-LS-FH 9/8-10/7/25	CORPORATE FUND	FINANCE/ADMINISTRATION	109.86
	10/31/25	AWS HOSTED DNS 10/25	CORPORATE FUND	FINANCE/ADMINISTRATION	1.60
	10/31/25	9/27-10/27/25	CORPORATE FUND	FINANCE/ADMINISTRATION	49.50
	10/31/25	POST SURGERY - RA	CORPORATE FUND	FINANCE/ADMINISTRATION	56.99
	10/31/25	GFOA MEMB-LS-10/25-9/26	CORPORATE FUND	FINANCE/ADMINISTRATION	250.00
	10/31/25	BEST OF THE BEST PLAQUE	CORPORATE FUND	FINANCE/ADMINISTRATION	130.00
	10/31/25	PHOTOS FROM GALA	CORPORATE FUND	FINANCE/ADMINISTRATION	20.00
	10/31/25	CREAMER FOR IPRA SAFETY SY	CORPORATE FUND	FINANCE/ADMINISTRATION	4.99
	10/31/25	DRINKS/PRIZES HALLOWEEN PA	CORPORATE FUND	FINANCE/ADMINISTRATION	75.98
	10/31/25	PB [2] POSTAGE INK 10/2/25	CORPORATE FUND	FINANCE/ADMINISTRATION	182.58
	10/31/25	SLT WORK LUNCH-SR-RB-SH-CQ	CORPORATE FUND	FINANCE/ADMINISTRATION	53.39
	10/31/25	8 18 INCH PIZZAS FOR PARTY	CORPORATE FUND	FINANCE/ADMINISTRATION	230.00
	10/31/25	CERTIFIED MAIL	CORPORATE FUND	FINANCE/ADMINISTRATION	11.87
	10/31/25	ACRYLIC PODIUM LOGO	CORPORATE FUND	FINANCE/ADMINISTRATION	78.28
	10/31/25	CREATIVE CLOUD SUBSCRIPTIO	CORPORATE FUND	MARKETING/COMMUNICATIO	179.98
	10/31/25	HR RETRACTABLE BANNER	CORPORATE FUND	MARKETING/COMMUNICATIO	93.27
	10/31/25	CM 9/8-10/7/25	CORPORATE FUND	MARKETING/COMMUNICATIO	36.62
	10/31/25	MUSCO ARMSTRONG CONTROLS	CORPORATE FUND	PARKS	475.00
	10/31/25	HITCH PIN	CORPORATE FUND	PARKS	12.16
	10/31/25	NO TRESSPASSING SIGN -MB G	CORPORATE FUND	PARKS	23.95
	10/31/25	TS BIBERALL	CORPORATE FUND	PARKS	149.99
	10/31/25	START IGNITION SWITCH-GATO	CORPORATE FUND	PARKS	29.99
	10/31/25	100 PAIRS EARPLUGS	CORPORATE FUND	PARKS	53.80

VENDOR SORT KEY	DATE	DESCRIPTION	FUND	DEPARTMENT	AMOUNT
	10/31/25	INSULATED BIBS FOR TS	CORPORATE FUND	PARKS	149.30
	10/31/25	SH-RA-MS-RC 9/8-10/7/25	CORPORATE FUND	PARKS	128.52
	10/31/25	ELEC 8/22/25-9/23/25	CORPORATE FUND	PARKS	41.38
	10/31/25	ELEC 8/21/25-9/22/25	CORPORATE FUND	PARKS	67.93
	10/31/25	ELEC 8/20/25-9/19/25	CORPORATE FUND	PARKS	581.11
	10/31/25	ELEC 8/20/25-9/19/25	CORPORATE FUND	PARKS	33.01
	10/31/25	ELEC 8/20/25-9/19/25	CORPORATE FUND	PARKS	43.48
	10/31/25	ELEC 8/22/25-9/23/25	CORPORATE FUND	PARKS	286.01
	10/31/25	ELEC 8/21/25-9/22/25	CORPORATE FUND	PARKS	40.75
	10/31/25	ELEC 8/20/25-9/19/25	CORPORATE FUND	PARKS	116.23
	10/31/25	ELEC 8/20/25-9/19/25	CORPORATE FUND	PARKS	263.15
	10/31/25	BIKE FIX-IT STATION	CORPORATE FUND	PARKS	39.00
	10/31/25	3 DEDICATION TREES	CORPORATE FUND	PARKS	935.00
	10/31/25	13 KNIT/20BASEBALL HATS	CORPORATE FUND	PARKS	542.00
	10/31/25	GARBAGE ARM PK 100825	CORPORATE FUND	PARKS	180.26
	10/31/25	GARBAGE-PKS 091025	CORPORATE FUND	PARKS	864.71
	10/31/25	GARBAGE-ARM PK 091025	CORPORATE FUND	PARKS	180.26
	10/31/25	GARBAGE-PKS 100825	CORPORATE FUND	PARKS	864.71
	10/31/25	COMM PARK CONCRETE	CORPORATE FUND	PARKS	21.52
	10/31/25	RED HAWK BRIDGE REPAIR	CORPORATE FUND	PARKS	39.94
	10/31/25	VEH 125 FULL PM	CORPORATE FUND	PARKS	766.15
	10/31/25	VEH 119 OIL CHANGE/FLEX PL	CORPORATE FUND	PARKS	1,500.02
	10/31/25	VEH 130 OIL CHANGE/INSP	CORPORATE FUND	PARKS	104.12
	10/31/25	VEH 117 OIL CHANGE/INSP	CORPORATE FUND	PARKS	95.12
	10/31/25	VEH 128 OIL CHANGE/INSP	CORPORATE FUND	PARKS	50.12
	10/31/25	VEH 109 OIL CHANGE/INSP	CORPORATE FUND	PARKS	40.93
	10/31/25	VEH 121 OIL CHANGE/INSP	CORPORATE FUND	PARKS	122.86
	10/31/25	VEH 108 OIL CHANGE/PARTS/I	CORPORATE FUND	PARKS	1,234.15
	10/31/25	VEH 107 OIL CHANGE/INSP	CORPORATE FUND	PARKS	70.75
	10/31/25	VEH 123 OIL CHANGE AND REP	CORPORATE FUND	PARKS	50.19
	10/31/25	VEH 127 OIL CHANGE AND REP	CORPORATE FUND	PARKS	53.97
	10/31/25	VEH 120 OIL CHANGE AND REP	CORPORATE FUND	PARKS	52.99
	10/31/25	VEH 126 OIL CHANGE AND REP	CORPORATE FUND	PARKS	45.99
	10/31/25	VEH 115 OIL CHANGE	CORPORATE FUND	PARKS	55.25
	10/31/25	VEH 124 OIL CHANGE	CORPORATE FUND	PARKS	55.19
	10/31/25	COMMUNITY COAL CAN	CORPORATE FUND	PARKS	14.94
	10/31/25	RED HAWK BRIDGE REPAIR	CORPORATE FUND	PARKS	59.94
	10/31/25	3 TREATED 4X4	CORPORATE FUND	PARKS	33.24
	10/31/25	CAMBRIDGE PARK	CORPORATE FUND	PARKS	22.28
	10/31/25	MCCASLIN PAVER BRICKS	CORPORATE FUND	PARKS	2,031.75
	10/31/25	BATTERY FOR SKID STEER	CORPORATE FUND	PARKS	177.64
	10/31/25	NEW BATTERY	CORPORATE FUND	PARKS	199.99
	10/31/25	NEW BATTERY	CORPORATE FUND	PARKS	215.99
	10/31/25	FULL REFUND BATTERY	CORPORATE FUND	PARKS	215.99-
	10/31/25	FULL REFUND BATTERY	CORPORATE FUND	PARKS	215.99-
	10/31/25	FULL REFUND BATTERY	CORPORATE FUND	PARKS	215.99
	10/31/25	RETURNED - WRONG SIZE	CORPORATE FUND	PARKS	149.30-
	10/31/25	RETURNED - WRONG SIZE	CORPORATE FUND	PARKS	149.30-
	10/31/25	RETURNED - WRONG SIZE	CORPORATE FUND	PARKS	149.30
	10/31/25	SLEPICKA FITNESS STATION P	CORPORATE FUND	PARKS	63.16
	10/31/25	SHOP EYE WASH STATION	CORPORATE FUND	MAINTENANCE FACILITY	57.90
	10/31/25	FIBER 9/11-10/10/25	CORPORATE FUND	MAINTENANCE FACILITY	602.64
	10/31/25	ELEC 8/21/25-9/22/25	CORPORATE FUND	MAINTENANCE FACILITY	428.25
	10/31/25	CABLE MB 10/9-11/8	CORPORATE FUND	MAINTENANCE FACILITY	113.18
	10/31/25	GARBAGE-MB 091025	CORPORATE FUND	MAINTENANCE FACILITY	216.18
	10/31/25	GARBAGE-MB 100825	CORPORATE FUND	MAINTENANCE FACILITY	216.18

VENDOR SORT KEY	DATE	DESCRIPTION	FUND	DEPARTMENT	AMOUNT
	10/31/25	COMPRESSED AIR FILTER	CORPORATE FUND	MAINTENANCE FACILITY	208.55
	10/31/25	ADAPTER/GUAGE	CORPORATE FUND	MAINTENANCE FACILITY	88.47
	10/31/25	OIL PARTS FOR SHOP	CORPORATE FUND	MAINTENANCE FACILITY	20.76
	10/31/25	GAS 7/21-8/19/25	CORPORATE FUND	MAINTENANCE FACILITY	163.54
	10/31/25	LOCKED KEY CABINET	CORPORATE FUND	REGISTRATION SERVICES	79.99
	10/31/25	AK-BS 9/8-10/7/25	CORPORATE FUND	REGISTRATION SERVICES	73.24
	10/31/25	2 CAMERAS-SERVER ROOMS	CORP REPAIR & REPL	CORP REPAIR & REPLACEM	339.58
	10/31/25	[3] ELLIPTICALS-5YR WARRANT	REC REPAIR & REPLA	REC REPAIR & REPLACEME	14,760.50
	10/31/25	FIELD TRIP GUESTS	RECREATION FUND	NON-DEPARTMENTAL	64.00
	10/31/25	MEET THEME SUPPLIES- NOV	RECREATION FUND	NON-DEPARTMENTAL	82.93
	10/31/25	SWIM MEET CANDY	RECREATION FUND	NON-DEPARTMENTAL	73.80
	10/31/25	HAIR TIES STASH	RECREATION FUND	NON-DEPARTMENTAL	16.25
	10/31/25	RECITAL	RECREATION FUND	NON-DEPARTMENTAL	37.43
	10/31/25	BEETLEJUICE COSTUMES	RECREATION FUND	NON-DEPARTMENTAL	45.89
	10/31/25	25-26 COMP LEOS	RECREATION FUND	NON-DEPARTMENTAL	2,801.62
	10/31/25	HAYRIDE TIX ADULTS PM	RECREATION FUND	NON-DEPARTMENTAL	352.00
	10/31/25	HAYRIDE TIX ADULTS AM	RECREATION FUND	NON-DEPARTMENTAL	352.00
	10/31/25	AD BOOST - FVF 0 ENROLLMEN	RECREATION FUND	MARKETING/COMMUNICATIO	10.25
	10/31/25	CANON MAINT CARTRIDGE	RECREATION FUND	MARKETING/COMMUNICATIO	119.48
	10/31/25	LIFT INSPECTION	RECREATION FUND	FOUNTAIN VIEW REC CENT	345.00
	10/31/25	URINAL CAKES	RECREATION FUND	FOUNTAIN VIEW REC CENT	50.23
	10/31/25	HOSES	RECREATION FUND	FOUNTAIN VIEW REC CENT	56.36
	10/31/25	WINDOW CLEANER	RECREATION FUND	FOUNTAIN VIEW REC CENT	19.99
	10/31/25	AIR FRESHENER	RECREATION FUND	FOUNTAIN VIEW REC CENT	11.88
	10/31/25	MOP REFILL	RECREATION FUND	FOUNTAIN VIEW REC CENT	9.94
	10/31/25	FEBREZE	RECREATION FUND	FOUNTAIN VIEW REC CENT	14.69
	10/31/25	OCC CEILING SENSOR	RECREATION FUND	FOUNTAIN VIEW REC CENT	211.98
	10/31/25	CLR	RECREATION FUND	FOUNTAIN VIEW REC CENT	83.97
	10/31/25	PARKING LOT LIGHT REPAIR	RECREATION FUND	FOUNTAIN VIEW REC CENT	8,608.38
	10/31/25	FIBER 9/11-10/10/25	RECREATION FUND	FOUNTAIN VIEW REC CENT	1,189.05
	10/31/25	CABLE FVRC 9/26-10/25	RECREATION FUND	FOUNTAIN VIEW REC CENT	255.91
	10/31/25	INTERNET FVRC 9/26-10/25	RECREATION FUND	FOUNTAIN VIEW REC CENT	274.19
	10/31/25	GARBAGE FVRC 100825	RECREATION FUND	FOUNTAIN VIEW REC CENT	755.47
	10/31/25	GARBAGE-FVRC 091025	RECREATION FUND	FOUNTAIN VIEW REC CENT	755.47
	10/31/25	NBR SLOW CLOSE VALVE	RECREATION FUND	FOUNTAIN VIEW REC CENT	395.80
	10/31/25	NEXTIVA VOIP 11/25	RECREATION FUND	FOUNTAIN VIEW REC CENT	41.68
	10/31/25	GAS 8/21-9/22/25	RECREATION FUND	FOUNTAIN VIEW REC CENT	1,358.64
	10/31/25	VARIOUS JANITORIAL SUPPLIE	RECREATION FUND	FOUNTAIN VIEW REC CENT	386.06
	10/31/25	SHAMPOO	RECREATION FUND	FOUNTAIN VIEW REC CENT	124.82
	10/31/25	VARIOUS JANITORIAL SUPPLIE	RECREATION FUND	FOUNTAIN VIEW REC CENT	136.56
	10/31/25	VARIOUS JANITORIAL SUPPLIE	RECREATION FUND	FOUNTAIN VIEW REC CENT	429.25
	10/31/25	LEMON CLEANER	RECREATION FUND	FOUNTAIN VIEW REC CENT	40.20
	10/31/25	VARIOUS JANITORIAL SUPPLIE	RECREATION FUND	FOUNTAIN VIEW REC CENT	539.50
	10/31/25	VARIOUS JANITORIAL SUPPLIE	RECREATION FUND	FOUNTAIN VIEW REC CENT	309.61
	10/31/25	LEMON CLEANER	RECREATION FUND	FOUNTAIN VIEW REC CENT	13.40
	10/31/25	VARIOUS JANITORIAL SUPPLIE	RECREATION FUND	FOUNTAIN VIEW REC CENT	499.52
	10/31/25	SMOOTHIE MIX	RECREATION FUND	CONCESSIONS	47.04
	10/31/25	HAND WARMERS	RECREATION FUND	CONCESSIONS	28.85
	10/31/25	HALLWAY TABLECLOTH AND DIS	RECREATION FUND	CONCESSIONS	105.01
	10/31/25	POPCORN	RECREATION FUND	CONCESSIONS	119.98
	10/31/25	CHEESE CUPS	RECREATION FUND	CONCESSIONS	119.97
	10/31/25	HALLWAY SUPPLIES	RECREATION FUND	CONCESSIONS	74.77
	10/31/25	POPCORN MACHINE LIGHTBULB	RECREATION FUND	CONCESSIONS	10.89
	10/31/25	FVRC CONCESSIONS BINS	RECREATION FUND	CONCESSIONS	48.69
	10/31/25	SHAVED ICE SYRUP	RECREATION FUND	CONCESSIONS	22.99
	10/31/25	HALLWAY SUPPLIES	RECREATION FUND	CONCESSIONS	26.97

VENDOR SORT KEY	DATE	DESCRIPTION	FUND	DEPARTMENT	AMOUNT
	10/31/25	PEPSI NOZZLE REPLACEMENTS	RECREATION FUND	CONCESSIONS	25.99
	10/31/25	SMOOTHIE MIX	RECREATION FUND	CONCESSIONS	70.56
	10/31/25	FIBER 9/11-10/10/25	RECREATION FUND	CONCESSIONS	308.31
	10/31/25	GARBAGE-MCC CON 091025	RECREATION FUND	CONCESSIONS	252.33
	10/31/25	GARBAGE MCC CON 100825	RECREATION FUND	CONCESSIONS	252.33
	10/31/25	PROPANE	RECREATION FUND	CONCESSIONS	36.99
	10/31/25	HOT CHOCOLATE MIX	RECREATION FUND	CONCESSIONS	109.89
	10/31/25	BUNS	RECREATION FUND	CONCESSIONS	6.36
	10/31/25	JALAPENOS AND FROSTY PAWS	RECREATION FUND	CONCESSIONS	21.45
	10/31/25	BURGERS AND BUNS	RECREATION FUND	CONCESSIONS	29.35
	10/31/25	FROSTY PAWS AND JALAPENOS	RECREATION FUND	CONCESSIONS	25.44
	10/31/25	JALAPENOS AND FROSTY PAWS	RECREATION FUND	CONCESSIONS	21.45
	10/31/25	PRETZELS AND CANDY	RECREATION FUND	CONCESSIONS	580.54
	10/31/25	PRETZELS	RECREATION FUND	CONCESSIONS	76.86
	10/31/25	PRETZELS AND CHIPS	RECREATION FUND	CONCESSIONS	84.36
	10/31/25	CANDY AND PRETZELS	RECREATION FUND	CONCESSIONS	324.43
	10/31/25	PRETZELS AND CANDY	RECREATION FUND	CONCESSIONS	224.00
	10/31/25	TOWELS AND PLATES	RECREATION FUND	CONCESSIONS	33.77
	10/31/25	KETCHUP	RECREATION FUND	CONCESSIONS	27.48
	10/31/25	PRETZELS	RECREATION FUND	CONCESSIONS	258.40
	10/31/25	PAPER TOWELS	RECREATION FUND	CONCESSIONS	20.93
	10/31/25	BASSET TRAINING	RECREATION FUND	CONCESSIONS	7.95
	10/31/25	JANINA BASSET TRAINING	RECREATION FUND	CONCESSIONS	7.95
	10/31/25	FRIDGE THERMOMETER	RECREATION FUND	CONCESSIONS	9.98
	10/31/25	WINTER COAT	RECREATION FUND	FACILITIES	139.99
	10/31/25	URINAL CAKES	RECREATION FUND	SIMKUS FACILITY	32.99
	10/31/25	FIBER/PHONES SIP 9/74-10/6	RECREATION FUND	SIMKUS FACILITY	1,574.89
	10/31/25	INTERNET SRC 9/24-10/23	RECREATION FUND	SIMKUS FACILITY	263.85
	10/31/25	CABLE SRC 10/1-10/31	RECREATION FUND	SIMKUS FACILITY	10.48
	10/31/25	GARBAGE-SRC 100825	RECREATION FUND	SIMKUS FACILITY	547.77
	10/31/25	GARBAGE-SRC 091025	RECREATION FUND	SIMKUS FACILITY	547.77
	10/31/25	DRILL FOR LOCKS	RECREATION FUND	SIMKUS FACILITY	5.48
	10/31/25	PAINT FOR SIMKUS GYM	RECREATION FUND	SIMKUS FACILITY	29.96
	10/31/25	PAINT FOR SIMKUS GYM	RECREATION FUND	SIMKUS FACILITY	23.44
	10/31/25	GAS 7/22-8/20/25	RECREATION FUND	SIMKUS FACILITY	1,199.44
	10/31/25	TORNADO CORDLESS VACUUM	RECREATION FUND	SIMKUS FACILITY	650.00
	10/31/25	VARIOUS JANITORIAL SUPPLIE	RECREATION FUND	SIMKUS FACILITY	431.76
	10/31/25	GAS 7/22-8/20/25	RECREATION FUND	CORAL COVE	683.88
	10/31/25	SPONSOR PLAQUE	RECREATION FUND	RECREATION	33.00
	10/31/25	PREVIEW DAY TABLECLOTHS	RECREATION FUND	RECREATION	39.78
	10/31/25	CUPS FOR SONNY ACRES	RECREATION FUND	RECREATION	7.99
	10/31/25	WHITE CARDSTOCK	RECREATION FUND	RECREATION	13.49
	10/31/25	BINDERS;PLAYDOH	RECREATION FUND	RECREATION	51.37
	10/31/25	KR PUZZLES	RECREATION FUND	RECREATION	15.93
	10/31/25	B&A SNACKS	RECREATION FUND	RECREATION	789.58
	10/31/25	DOC FIELD TRIP BAL	RECREATION FUND	RECREATION	99.50
	10/31/25	DOC SUPPLIES	RECREATION FUND	RECREATION	34.00
	10/31/25	HALLOWEEN HAVOC SHIRTS	RECREATION FUND	RECREATION	600.00
	10/31/25	HALLOWEEN HAVOC SHIRTS	RECREATION FUND	RECREATION	92.35
	10/31/25	TURKEY SHOOT SHIRTS	RECREATION FUND	RECREATION	475.15
	10/31/25	DODGEBALL T-SHIRTS	RECREATION FUND	RECREATION	223.75
	10/31/25	STAFF OUTING	RECREATION FUND	RECREATION	172.26
	10/31/25	TEENIE WEENIE EVENT SUPPLI	RECREATION FUND	RECREATION	33.96
	10/31/25	STARVED ROCK 3 ADD. TICKET	RECREATION FUND	RECREATION	195.00
	10/31/25	ADULT VOLLEYBALL SCHEDULES	RECREATION FUND	RECREATION	56.00
	10/31/25	ADULT KICKBALL SCHEDULES	RECREATION FUND	RECREATION	112.00

VENDOR SORT KEY	DATE	DESCRIPTION	FUND	DEPARTMENT	AMOUNT
	10/31/25	PICKLEBALL SCHEDULE	RECREATION FUND	RECREATION	70.00
	10/31/25	DODGEBALL SCHEDULE	RECREATION FUND	RECREATION	28.00
	10/31/25	ADULT SOFTBALLS	RECREATION FUND	RECREATION	2,798.40
	10/31/25	MORTON ARB BAL	RECREATION FUND	RECREATION	296.00
	10/31/25	BEAUTIFUL NOISE BAL	RECREATION FUND	RECREATION	2,190.00
	10/31/25	HOLOCAUST MUSEUM BAL	RECREATION FUND	RECREATION	152.00
	10/31/25	CALLING POST MORE CALLS	RECREATION FUND	RECREATION	79.95
	10/31/25	ALL ABOUT ME PRINTABLE	RECREATION FUND	RECREATION	2.00
	10/31/25	FIELD TRIP CHILDREN	RECREATION FUND	RECREATION	800.00
	10/31/25	FIELD TRIP CHILDREN	RECREATION FUND	RECREATION	256.00
	10/31/25	TEENIE WEENIE NYE SUPPLIES	RECREATION FUND	RECREATION	15.99
	10/31/25	DOC SUPPLIES	RECREATION FUND	RECREATION	7.99
	10/31/25	BREWERS DEP	RECREATION FUND	RECREATION	300.00
	10/31/25	PITCHING RUBBERS	RECREATION FUND	RECREATION	675.00
	10/31/25	SOCCER GOALS	RECREATION FUND	RECREATION	3,549.90
	10/31/25	SOFTBALLS	RECREATION FUND	RECREATION	479.70
	10/31/25	FIELD LINERS	RECREATION FUND	RECREATION	695.00
	10/31/25	PITCHING RUBBERS	RECREATION FUND	RECREATION	297.80
	10/31/25	RETURN	RECREATION FUND	RECREATION	80.00
	10/31/25	SOFTBALLS	RECREATION FUND	RECREATION	504.70
	10/31/25	GYM TAPE	RECREATION FUND	RECREATION	40.47
	10/31/25	TEENIE WEENIE SUPPLIES	RECREATION FUND	RECREATION	28.95
	10/31/25	B&A SUPPLIES	RECREATION FUND	RECREATION	23.99
	10/31/25	DOC SUPPLIES	RECREATION FUND	RECREATION	12.72
	10/31/25	FRANK LLOYD DEP	RECREATION FUND	RECREATION	200.00
	10/31/25	POLAR ORNAMENTS	RECREATION FUND	RECREATION	6.99
	10/31/25	TOT SUPPLIES	RECREATION FUND	RECREATION	31.24
	10/31/25	TRICK OR TREAT TRAIN COSTU	RECREATION FUND	RECREATION	23.69
	10/31/25	TOT DECORATIONS	RECREATION FUND	RECREATION	26.68
	10/31/25	TOT GAMES	RECREATION FUND	RECREATION	115.52
	10/31/25	SPECIAL EVENTS SUPPLIES	RECREATION FUND	RECREATION	7.60
	10/31/25	RENTALS PLASTIC ROLL	RECREATION FUND	RECREATION	25.59
	10/31/25	POLAR ORNAMENTS	RECREATION FUND	RECREATION	34.95
	10/31/25	RETURN DECOR CANCELED EVEN	RECREATION FUND	RECREATION	135.84-
	10/31/25	RETURN DECOR CANCELED EVEN	RECREATION FUND	RECREATION	135.84-
	10/31/25	RETURN DECOR CANCELED EVEN	RECREATION FUND	RECREATION	135.84
	10/31/25	SEPT MEMBER CHALLENGE PRIZ	RECREATION FUND	RECREATION	50.00
	10/31/25	BLEACHER CAPS	RECREATION FUND	RECREATION	82.52
	10/31/25	BODY FAT CALIPERS	RECREATION FUND	RECREATION	13.99
	10/31/25	FLOOR CLEANING PADS	RECREATION FUND	RECREATION	11.98
	10/31/25	TOT EVENT SUPPLIES	RECREATION FUND	RECREATION	27.98
	10/31/25	BEETLEJUICE COSTUMES	RECREATION FUND	RECREATION	72.98
	10/31/25	BEETLEJUICE PROP	RECREATION FUND	RECREATION	47.99
	10/31/25	LYDIA COSTUME RETURN	RECREATION FUND	RECREATION	67.99-
	10/31/25	LYDIA COSTUME RETURN	RECREATION FUND	RECREATION	67.99-
	10/31/25	LYDIA COSTUME RETURN	RECREATION FUND	RECREATION	67.99
	10/31/25	SHOWCASE SUPPLY	RECREATION FUND	RECREATION	53.98
	10/31/25	SHOWCASE SUPPLIES/COSTUMES	RECREATION FUND	RECREATION	47.88
	10/31/25	BOWS- SUPPLIES	RECREATION FUND	RECREATION	88.56
	10/31/25	SEASONAL DANCE SUPPLY	RECREATION FUND	RECREATION	35.99
	10/31/25	HOLIDAY SHOWCASE	RECREATION FUND	RECREATION	53.97
	10/31/25	SEASONAL DANCE SUPPLY	RECREATION FUND	RECREATION	15.98
	10/31/25	BEETLEJUICE COSTUMES	RECREATION FUND	RECREATION	42.99
	10/31/25	SEASONAL DANCE SUPPLY	RECREATION FUND	RECREATION	4.39
	10/31/25	FORTE PROP	RECREATION FUND	RECREATION	53.48
	10/31/25	RECITAL COSTUMES/SUPPLIES	RECREATION FUND	RECREATION	77.32

VENDOR SORT KEY	DATE	DESCRIPTION	FUND	DEPARTMENT	AMOUNT
	10/31/25	RECITAL SUPPLIES	RECREATION FUND	RECREATION	38.65
	10/31/25	FORTE PROP RETURN	RECREATION FUND	RECREATION	21.99-
	10/31/25	FORTE PROP RETURN	RECREATION FUND	RECREATION	21.99-
	10/31/25	FORTE PROP RETURN	RECREATION FUND	RECREATION	21.99-
	10/31/25	FORTE PROP RETURN	RECREATION FUND	RECREATION	21.99-
	10/31/25	FORTE PROP RETURN	RECREATION FUND	RECREATION	21.99
	10/31/25	FORTE PROP RETURN	RECREATION FUND	RECREATION	21.99
	10/31/25	HANGERS-COSTUMES	RECREATION FUND	RECREATION	43.98
	10/31/25	SEASONAL DANCE SUPPLY	RECREATION FUND	RECREATION	39.99
	10/31/25	BOWS SUPPLIES	RECREATION FUND	RECREATION	39.98
	10/31/25	BEETLEJUICE SET	RECREATION FUND	RECREATION	49.95
	10/31/25	BEETLEJUICE SET_ RETURN	RECREATION FUND	RECREATION	54.95-
	10/31/25	BEETLEJUICE SET_ RETURN	RECREATION FUND	RECREATION	54.95-
	10/31/25	BEETLEJUICE SET_ RETURN	RECREATION FUND	RECREATION	54.95
	10/31/25	IPAD COVER	RECREATION FUND	RECREATION	9.99
	10/31/25	SHOWCASE SUPPLIES	RECREATION FUND	RECREATION	69.98
	10/31/25	TISSUES & BANDAIDS	RECREATION FUND	RECREATION	56.96
	10/31/25	DEPT SUPPLIES	RECREATION FUND	RECREATION	40.06
	10/31/25	FORTE PROP	RECREATION FUND	RECREATION	43.98
	10/31/25	GAMES	RECREATION FUND	RECREATION	40.38
	10/31/25	DEPT SUPPLIES	RECREATION FUND	RECREATION	2.10
	10/31/25	ANTI COLLISION WINDOW CLIN	RECREATION FUND	RECREATION	3.29
	10/31/25	BEETLEJUICE ACCESSORIES	RECREATION FUND	RECREATION	7.98
	10/31/25	DEPT SUPPLIES	RECREATION FUND	RECREATION	19.79
	10/31/25	PIRATE TREASURE HUNT SUPPL	RECREATION FUND	RECREATION	15.98
	10/31/25	TAPE	RECREATION FUND	RECREATION	13.04
	10/31/25	ADULT ONLY THEME SUPPLY CC	RECREATION FUND	RECREATION	86.85
	10/31/25	PIRATE TREASURE HUNT SUPPL	RECREATION FUND	RECREATION	6.99
	10/31/25	ITUNES SUBSCRIPTION	RECREATION FUND	RECREATION	16.99
	10/31/25	8 REC-FIT-SOD 9/8-10/7/25	RECREATION FUND	RECREATION	292.95
	10/31/25	2 REC-6 B/A 9/8-10/7/25	RECREATION FUND	RECREATION	292.95
	10/31/25	CABLE FITNESS 9/26-10/25	RECREATION FUND	RECREATION	383.86
	10/31/25	FALL 1 2025	RECREATION FUND	RECREATION	378.00
	10/31/25	NEW GYMNASTICS MATS	RECREATION FUND	RECREATION	2,254.00
	10/31/25	DISH TV - OCT 25	RECREATION FUND	RECREATION	122.23
	10/31/25	SEASONAL DANCE SUPPLY	RECREATION FUND	RECREATION	23.00
	10/31/25	SEASONAL HALLOWEEN	RECREATION FUND	RECREATION	12.50
	10/31/25	REFUND FOR POMS FIT KIT	RECREATION FUND	RECREATION	300.00-
	10/31/25	REFUND FOR POMS FIT KIT	RECREATION FUND	RECREATION	300.00-
	10/31/25	REFUND FOR POMS FIT KIT	RECREATION FUND	RECREATION	300.00
	10/31/25	POMS UNIFORMS 25-26	RECREATION FUND	RECREATION	3,578.05
	10/31/25	DIAL M BAL	RECREATION FUND	RECREATION	2,481.64
	10/31/25	DOLPHIN'S SWIMMERS T-SHIRT	RECREATION FUND	RECREATION	863.75
	10/31/25	COACHES POLOS & STAFF SHIR	RECREATION FUND	RECREATION	306.50
	10/31/25	REC ATTDG GIFT CARD	RECREATION FUND	RECREATION	30.00
	10/31/25	FALL SOCCER MEDALS	RECREATION FUND	RECREATION	1,404.00
	10/31/25	PICKLEBALL PLAQUES	RECREATION FUND	RECREATION	72.20
	10/31/25	VOLLEYBALL PLAQUES	RECREATION FUND	RECREATION	84.24
	10/31/25	MATERIAL TO POST ADS	RECREATION FUND	RECREATION	115.86
	10/31/25	LINEN CLEANING	RECREATION FUND	RECREATION	477.75
	10/31/25	CRIME TOURS BAL	RECREATION FUND	RECREATION	2,149.60
	10/31/25	SAMMY AND CODY MASCOT CLEA	RECREATION FUND	RECREATION	120.00
	10/31/25	ZOO LIGHTS PAYMENT	RECREATION FUND	RECREATION	515.60
	10/31/25	RETURN SAMS CANDY TOT	RECREATION FUND	RECREATION	59.44-
	10/31/25	RETURN SAMS CANDY TOT	RECREATION FUND	RECREATION	59.44-
	10/31/25	RETURN CANDY TOT	RECREATION FUND	RECREATION	10.78-

VENDOR SORT KEY	DATE	DESCRIPTION	FUND	DEPARTMENT	AMOUNT
	10/31/25	RETURN CANDY TOT	RECREATION FUND	RECREATION	10.78-
	10/31/25	RETURN CANDY TOT	RECREATION FUND	RECREATION	10.78
	10/31/25	RETURN CANDY TOT	RECREATION FUND	RECREATION	59.44
	10/31/25	RETURN CANDY TOT	RECREATION FUND	RECREATION	119.81-
	10/31/25	RETURN CANDY TOT	RECREATION FUND	RECREATION	119.81-
	10/31/25	RETURN CANDY TOT	RECREATION FUND	RECREATION	119.81
	10/31/25	TRICK OR TREAT TRAIL CANDY	RECREATION FUND	RECREATION	559.45
	10/31/25	SODA AND JUICE	RECREATION FUND	RECREATION	50.29
	10/31/25	TOTT CANDY RETURN	RECREATION FUND	RECREATION	132.76-
	10/31/25	TOTT CANDY RETURN	RECREATION FUND	RECREATION	132.76-
	10/31/25	TOTT CANDY RETURN	RECREATION FUND	RECREATION	132.76
	10/31/25	TOT CANDY	RECREATION FUND	RECREATION	377.17
	10/31/25	MONTHLY MUSIC STREAMING	RECREATION FUND	RECREATION	19.99
	10/31/25	BEETLEJUICE PROPS	RECREATION FUND	RECREATION	6.99
	10/31/25	BEETLEJUICE COSTUMES	RECREATION FUND	RECREATION	71.74
	10/31/25	EVALUATION STICKERS	RECREATION FUND	RECREATION	27.95
	10/31/25	TOT CANDY/DECORATIONS	RECREATION FUND	RECREATION	153.83
	10/31/25	SEASONAL DANCE SUPPLY	RECREATION FUND	RECREATION	22.98
	10/31/25	ELEC 8/21/25-9/22/25	RECREATION FUND	MCCASLIN FIELDS	2,017.46
	10/31/25	ELEC 8/21/25-9/22/25	RECREATION FUND	MCCASLIN FIELDS	24.30
	10/31/25	GARBAGE-MCC FLDS 091025	RECREATION FUND	MCCASLIN FIELDS	252.33
	10/31/25	GARBAGE MCC FLDS 100825	RECREATION FUND	MCCASLIN FIELDS	252.33
	10/31/25	LIFT STATION 11/25	RECREATION FUND	MCCASLIN FIELDS	20.00
	10/31/25	FIBER 9/11-10/10/25	RECREATION FUND	MINIATURE GOLF	308.32
	10/31/25	ELEC 8/21/25-9/22/25	RECREATION FUND	MINIATURE GOLF	388.91
	10/31/25	GARBAGE-CCMG 091025	RECREATION FUND	MINIATURE GOLF	336.45
	10/31/25	GARBAGE CCMG 100825	RECREATION FUND	MINIATURE GOLF	336.45
	10/31/25	GAS 8/18-9/17/25	RECREATION FUND	MINIATURE GOLF	56.95
	10/31/25	PLEAS HILL RAINGARDEN SIGN	CAPITAL IMPROVEMEN	CAPITAL IMPROVEMENT FU	613.00
				TOTAL:	102,155.89
PDRMA	10/31/25	PDRMA Insurance 10/25	CORPORATE FUND	ANCILLARY FUNDS	5,286.65
	10/31/25	PDRMA Insurance 10/25	CORPORATE FUND	ANCILLARY FUNDS	3,012.22
	10/31/25	PDRMA Insurance 10/25	CORPORATE FUND	ANCILLARY FUNDS	956.00
	10/31/25	PDRMA Insurance 10/25	CORPORATE FUND	ANCILLARY FUNDS	41.33
	10/31/25	PDRMA Insurance 10/25	CORPORATE FUND	ANCILLARY FUNDS	5,343.39
	10/31/25	PDRMA Insurance 10/25	CORPORATE FUND	ANCILLARY FUNDS	287.94
				TOTAL:	14,927.53
PDRMA	10/31/25	DENTAL PREMIUM	CORPORATE FUND	NON-DEPARTMENTAL	14.00
	10/31/25	DENTAL PREMIUM	CORPORATE FUND	NON-DEPARTMENTAL	14.00
	10/31/25	DENTAL PREMIUM	CORPORATE FUND	NON-DEPARTMENTAL	79.70
	10/31/25	DENTAL PREMIUM	CORPORATE FUND	NON-DEPARTMENTAL	79.70
	10/31/25	DENTAL PREMIUM	CORPORATE FUND	NON-DEPARTMENTAL	38.68
	10/31/25	DENTAL PREMIUM	CORPORATE FUND	NON-DEPARTMENTAL	42.75
	10/31/25	HEALTH PREMIUM	CORPORATE FUND	NON-DEPARTMENTAL	96.20
	10/31/25	HEALTH PREMIUM	CORPORATE FUND	NON-DEPARTMENTAL	96.20
	10/31/25	HEALTH PREMIUM	CORPORATE FUND	NON-DEPARTMENTAL	257.15
	10/31/25	HEALTH PREMIUM	CORPORATE FUND	NON-DEPARTMENTAL	257.15
	10/31/25	HEALTH PREMIUM	CORPORATE FUND	NON-DEPARTMENTAL	222.59
	10/31/25	HEALTH PREMIUM	CORPORATE FUND	NON-DEPARTMENTAL	222.59
	10/31/25	HEALTH PREMIUM	CORPORATE FUND	NON-DEPARTMENTAL	98.49
	10/31/25	HEALTH PREMIUM	CORPORATE FUND	NON-DEPARTMENTAL	117.45
	10/31/25	HEALTH PREMIUM	CORPORATE FUND	NON-DEPARTMENTAL	53.06
	10/31/25	HEALTH PREMIUM	CORPORATE FUND	NON-DEPARTMENTAL	53.06
	10/31/25	HEALTH PREMIUM	CORPORATE FUND	NON-DEPARTMENTAL	111.36

VENDOR SORT KEY	DATE	DESCRIPTION	FUND	DEPARTMENT	AMOUNT
	10/31/25	HEALTH PREMIUM	CORPORATE FUND	NON-DEPARTMENTAL	111.36
	10/31/25	VISION PREMIUM	CORPORATE FUND	NON-DEPARTMENTAL	3.94
	10/31/25	VISION PREMIUM	CORPORATE FUND	NON-DEPARTMENTAL	3.94
	10/31/25	VISION PREMIUM	CORPORATE FUND	NON-DEPARTMENTAL	19.29
	10/31/25	VISION PREMIUM	CORPORATE FUND	NON-DEPARTMENTAL	19.29
	10/31/25	VISION PREMIUM	CORPORATE FUND	NON-DEPARTMENTAL	4.67
	10/31/25	VISION PREMIUM	CORPORATE FUND	NON-DEPARTMENTAL	5.16
	10/31/25	10/25 PDRMA Health - CQ	CORPORATE FUND	ANCILLARY FUNDS	33.32
	10/31/25	10/25 PDRMA Health - KW	CORPORATE FUND	ANCILLARY FUNDS	6.80
	10/31/25	EAP PREMIUM	CORPORATE FUND	ANCILLARY FUNDS	0.20
	10/31/25	EAP PREMIUM	CORPORATE FUND	ANCILLARY FUNDS	0.20
	10/31/25	DENTAL PREMIUM	CORPORATE FUND	ANCILLARY FUNDS	2.04
	10/31/25	DENTAL PREMIUM	CORPORATE FUND	ANCILLARY FUNDS	2.04
	10/31/25	DENTAL PREMIUM	CORPORATE FUND	ANCILLARY FUNDS	2.04
	10/31/25	DENTAL PREMIUM	CORPORATE FUND	ANCILLARY FUNDS	2.04
	10/31/25	HEALTH PREMIUM	CORPORATE FUND	ANCILLARY FUNDS	34.66
	10/31/25	HEALTH PREMIUM	CORPORATE FUND	ANCILLARY FUNDS	34.66
	10/31/25	HEALTH PREMIUM	CORPORATE FUND	ANCILLARY FUNDS	65.84
	10/31/25	HEALTH PREMIUM	CORPORATE FUND	ANCILLARY FUNDS	65.84
	10/31/25	GROUP LIFE INSURANCE PREMI	CORPORATE FUND	ANCILLARY FUNDS	0.46
	10/31/25	GROUP LIFE INSURANCE PREMI	CORPORATE FUND	ANCILLARY FUNDS	0.46
	10/31/25	VISION PREMIUM	CORPORATE FUND	ANCILLARY FUNDS	0.29
	10/31/25	VISION PREMIUM	CORPORATE FUND	ANCILLARY FUNDS	0.29
	10/31/25	VISION PREMIUM	CORPORATE FUND	ANCILLARY FUNDS	0.29
	10/31/25	VISION PREMIUM	CORPORATE FUND	ANCILLARY FUNDS	0.29
	10/31/25	10/25 PDRMA Health - DG	CORPORATE FUND	FINANCE/ADMINISTRATION	47.64
	10/31/25	10/25 PDRMA Health - FH	CORPORATE FUND	FINANCE/ADMINISTRATION	105.43
	10/31/25	10/25 PDRMA Health - LN	CORPORATE FUND	FINANCE/ADMINISTRATION	47.64
	10/31/25	10/25 PDRMA Health - CQ	CORPORATE FUND	FINANCE/ADMINISTRATION	66.64
	10/31/25	10/25 PDRMA Health - SR	CORPORATE FUND	FINANCE/ADMINISTRATION	5.72
	10/31/25	10/25 PDRMA Health - LS	CORPORATE FUND	FINANCE/ADMINISTRATION	3.23
	10/31/25	10/25 PDRMA Health - KW	CORPORATE FUND	FINANCE/ADMINISTRATION	47.60
	10/31/25	EAP PREMIUM	CORPORATE FUND	FINANCE/ADMINISTRATION	5.10
	10/31/25	EAP PREMIUM	CORPORATE FUND	FINANCE/ADMINISTRATION	5.10
	10/31/25	DENTAL PREMIUM	CORPORATE FUND	FINANCE/ADMINISTRATION	57.00
	10/31/25	DENTAL PREMIUM	CORPORATE FUND	FINANCE/ADMINISTRATION	57.00
	10/31/25	DENTAL PREMIUM	CORPORATE FUND	FINANCE/ADMINISTRATION	28.50
	10/31/25	DENTAL PREMIUM	CORPORATE FUND	FINANCE/ADMINISTRATION	28.50
	10/31/25	DENTAL PREMIUM	CORPORATE FUND	FINANCE/ADMINISTRATION	14.26
	10/31/25	DENTAL PREMIUM	CORPORATE FUND	FINANCE/ADMINISTRATION	14.26
	10/31/25	HEALTH PREMIUM	CORPORATE FUND	FINANCE/ADMINISTRATION	724.06
	10/31/25	HEALTH PREMIUM	CORPORATE FUND	FINANCE/ADMINISTRATION	724.06
	10/31/25	HEALTH PREMIUM	CORPORATE FUND	FINANCE/ADMINISTRATION	460.91
	10/31/25	HEALTH PREMIUM	CORPORATE FUND	FINANCE/ADMINISTRATION	460.91
	10/31/25	GROUP LIFE INSURANCE PREMI	CORPORATE FUND	FINANCE/ADMINISTRATION	11.19
	10/31/25	GROUP LIFE INSURANCE PREMI	CORPORATE FUND	FINANCE/ADMINISTRATION	11.19
	10/31/25	HEALTH PREMIUM	CORPORATE FUND	FINANCE/ADMINISTRATION	486.54
	10/31/25	HEALTH PREMIUM	CORPORATE FUND	FINANCE/ADMINISTRATION	486.54
	10/31/25	VISION PREMIUM	CORPORATE FUND	FINANCE/ADMINISTRATION	7.99
	10/31/25	VISION PREMIUM	CORPORATE FUND	FINANCE/ADMINISTRATION	7.99
	10/31/25	VISION PREMIUM	CORPORATE FUND	FINANCE/ADMINISTRATION	4.00
	10/31/25	VISION PREMIUM	CORPORATE FUND	FINANCE/ADMINISTRATION	4.00
	10/31/25	VISION PREMIUM	CORPORATE FUND	FINANCE/ADMINISTRATION	1.99
	10/31/25	VISION PREMIUM	CORPORATE FUND	FINANCE/ADMINISTRATION	1.99
	10/31/25	10/25 PDRMA Health - TE	CORPORATE FUND	MARKETING/COMMUNICATIO	132.19
	10/31/25	10/25 PDRMA Health - CM	CORPORATE FUND	MARKETING/COMMUNICATIO	95.46

VENDOR SORT KEY	DATE	DESCRIPTION	FUND	DEPARTMENT	AMOUNT
	10/31/25	EAP PREMIUM	CORPORATE FUND	MARKETING/COMMUNICATIO	2.08
	10/31/25	EAP PREMIUM	CORPORATE FUND	MARKETING/COMMUNICATIO	2.08
	10/31/25	DENTAL PREMIUM	CORPORATE FUND	MARKETING/COMMUNICATIO	20.36
	10/31/25	DENTAL PREMIUM	CORPORATE FUND	MARKETING/COMMUNICATIO	20.36
	10/31/25	DENTAL PREMIUM	CORPORATE FUND	MARKETING/COMMUNICATIO	20.36
	10/31/25	DENTAL PREMIUM	CORPORATE FUND	MARKETING/COMMUNICATIO	20.36
	10/31/25	HEALTH PREMIUM	CORPORATE FUND	MARKETING/COMMUNICATIO	477.70
	10/31/25	HEALTH PREMIUM	CORPORATE FUND	MARKETING/COMMUNICATIO	477.70
	10/31/25	HEALTH PREMIUM	CORPORATE FUND	MARKETING/COMMUNICATIO	668.78
	10/31/25	HEALTH PREMIUM	CORPORATE FUND	MARKETING/COMMUNICATIO	668.78
	10/31/25	GROUP LIFE INSURANCE PREMI	CORPORATE FUND	MARKETING/COMMUNICATIO	4.26
	10/31/25	GROUP LIFE INSURANCE PREMI	CORPORATE FUND	MARKETING/COMMUNICATIO	4.26
	10/31/25	VISION PREMIUM	CORPORATE FUND	MARKETING/COMMUNICATIO	2.85
	10/31/25	VISION PREMIUM	CORPORATE FUND	MARKETING/COMMUNICATIO	2.85
	10/31/25	VISION PREMIUM	CORPORATE FUND	MARKETING/COMMUNICATIO	2.85
	10/31/25	VISION PREMIUM	CORPORATE FUND	MARKETING/COMMUNICATIO	2.85
	10/31/25	10/25 PDRMA Health - RA	CORPORATE FUND	PARKS	69.43
	10/31/25	10/25 PDRMA Health - RC	CORPORATE FUND	PARKS	67.96
	10/31/25	10/25 PDRMA Health - SH	CORPORATE FUND	PARKS	57.40
	10/31/25	10/25 PDRMA Health - ER	CORPORATE FUND	PARKS	133.02
	10/31/25	10/25 PDRMA Health - JRAM	CORPORATE FUND	PARKS	98.43
	10/31/25	10/25 PDRMA Health - AS	CORPORATE FUND	PARKS	68.07
	10/31/25	10/25 PDRMA Health - MS	CORPORATE FUND	PARKS	68.08
	10/31/25	10/25 PDRMA Health - BT	CORPORATE FUND	PARKS	0.45
	10/31/25	10/25 PDRMA Health - DW	CORPORATE FUND	PARKS	34.01
	10/31/25	EAP PREMIUM	CORPORATE FUND	PARKS	7.90
	10/31/25	EAP PREMIUM	CORPORATE FUND	PARKS	8.11
	10/31/25	DENTAL PREMIUM	CORPORATE FUND	PARKS	12.22
	10/31/25	DENTAL PREMIUM	CORPORATE FUND	PARKS	12.22
	10/31/25	DENTAL PREMIUM	CORPORATE FUND	PARKS	71.26
	10/31/25	DENTAL PREMIUM	CORPORATE FUND	PARKS	71.26
	10/31/25	DENTAL PREMIUM	CORPORATE FUND	PARKS	40.72
	10/31/25	DENTAL PREMIUM	CORPORATE FUND	PARKS	40.72
	10/31/25	DENTAL PREMIUM	CORPORATE FUND	PARKS	10.18
	10/31/25	DENTAL PREMIUM	CORPORATE FUND	PARKS	14.25
	10/31/25	HEALTH PREMIUM	CORPORATE FUND	PARKS	282.19
	10/31/25	HEALTH PREMIUM	CORPORATE FUND	PARKS	282.19
	10/31/25	HEALTH PREMIUM	CORPORATE FUND	PARKS	1,531.50
	10/31/25	HEALTH PREMIUM	CORPORATE FUND	PARKS	1,531.50
	10/31/25	HEALTH PREMIUM	CORPORATE FUND	PARKS	679.31
	10/31/25	HEALTH PREMIUM	CORPORATE FUND	PARKS	679.31
	10/31/25	HEALTH PREMIUM	CORPORATE FUND	PARKS	344.34
	10/31/25	HEALTH PREMIUM	CORPORATE FUND	PARKS	482.08
	10/31/25	GROUP LIFE INSURANCE PREMI	CORPORATE FUND	PARKS	14.53
	10/31/25	GROUP LIFE INSURANCE PREMI	CORPORATE FUND	PARKS	15.04
	10/31/25	VISION PREMIUM	CORPORATE FUND	PARKS	1.71
	10/31/25	VISION PREMIUM	CORPORATE FUND	PARKS	1.71
	10/31/25	VISION PREMIUM	CORPORATE FUND	PARKS	9.98
	10/31/25	VISION PREMIUM	CORPORATE FUND	PARKS	9.98
	10/31/25	VISION PREMIUM	CORPORATE FUND	PARKS	5.70
	10/31/25	VISION PREMIUM	CORPORATE FUND	PARKS	5.70
	10/31/25	VISION PREMIUM	CORPORATE FUND	PARKS	1.43
	10/31/25	VISION PREMIUM	CORPORATE FUND	PARKS	2.00
	10/31/25	10/25 PDRMA Health - LC	CORPORATE FUND	REGISTRATION SERVICES	97.09
	10/31/25	10/25 PDRMA Health - AVK	CORPORATE FUND	REGISTRATION SERVICES	0.35
	10/31/25	10/25 PDRMA Health - BS	CORPORATE FUND	REGISTRATION SERVICES	53.84

VENDOR SORT KEY	DATE	DESCRIPTION	FUND	DEPARTMENT	AMOUNT
	10/31/25	EAP PREMIUM	CORPORATE FUND	REGISTRATION SERVICES	2.19
	10/31/25	EAP PREMIUM	CORPORATE FUND	REGISTRATION SERVICES	2.19
	10/31/25	DENTAL PREMIUM	CORPORATE FUND	REGISTRATION SERVICES	14.25
	10/31/25	DENTAL PREMIUM	CORPORATE FUND	REGISTRATION SERVICES	14.25
	10/31/25	DENTAL PREMIUM	CORPORATE FUND	REGISTRATION SERVICES	14.25
	10/31/25	DENTAL PREMIUM	CORPORATE FUND	REGISTRATION SERVICES	14.25
	10/31/25	HEALTH PREMIUM	CORPORATE FUND	REGISTRATION SERVICES	497.35
	10/31/25	HEALTH PREMIUM	CORPORATE FUND	REGISTRATION SERVICES	497.35
	10/31/25	GROUP LIFE INSURANCE PREMI	CORPORATE FUND	REGISTRATION SERVICES	3.52
	10/31/25	GROUP LIFE INSURANCE PREMI	CORPORATE FUND	REGISTRATION SERVICES	3.52
	10/31/25	HEALTH PREMIUM	CORPORATE FUND	REGISTRATION SERVICES	251.99
	10/31/25	HEALTH PREMIUM	CORPORATE FUND	REGISTRATION SERVICES	251.99
	10/31/25	VISION PREMIUM	CORPORATE FUND	REGISTRATION SERVICES	2.00
	10/31/25	VISION PREMIUM	CORPORATE FUND	REGISTRATION SERVICES	2.00
	10/31/25	VISION PREMIUM	CORPORATE FUND	REGISTRATION SERVICES	2.00
	10/31/25	VISION PREMIUM	CORPORATE FUND	REGISTRATION SERVICES	2.00
	10/31/25	DENTAL PREMIUM	RECREATION FUND	NON-DEPARTMENTAL	3.50
	10/31/25	DENTAL PREMIUM	RECREATION FUND	NON-DEPARTMENTAL	3.50
	10/31/25	DENTAL PREMIUM	RECREATION FUND	NON-DEPARTMENTAL	36.51
	10/31/25	DENTAL PREMIUM	RECREATION FUND	NON-DEPARTMENTAL	36.51
	10/31/25	DENTAL PREMIUM	RECREATION FUND	NON-DEPARTMENTAL	61.98
	10/31/25	DENTAL PREMIUM	RECREATION FUND	NON-DEPARTMENTAL	61.98
	10/31/25	DENTAL PREMIUM	RECREATION FUND	NON-DEPARTMENTAL	21.38
	10/31/25	DENTAL PREMIUM	RECREATION FUND	NON-DEPARTMENTAL	17.31
	10/31/25	HEALTH PREMIUM	RECREATION FUND	NON-DEPARTMENTAL	25.90
	10/31/25	HEALTH PREMIUM	RECREATION FUND	NON-DEPARTMENTAL	25.90
	10/31/25	HEALTH PREMIUM	RECREATION FUND	NON-DEPARTMENTAL	337.51
	10/31/25	HEALTH PREMIUM	RECREATION FUND	NON-DEPARTMENTAL	337.51
	10/31/25	HEALTH PREMIUM	RECREATION FUND	NON-DEPARTMENTAL	87.91
	10/31/25	HEALTH PREMIUM	RECREATION FUND	NON-DEPARTMENTAL	87.91
	10/31/25	HEALTH PREMIUM	RECREATION FUND	NON-DEPARTMENTAL	69.29
	10/31/25	HEALTH PREMIUM	RECREATION FUND	NON-DEPARTMENTAL	50.33
	10/31/25	HEALTH PREMIUM	RECREATION FUND	NON-DEPARTMENTAL	148.57
	10/31/25	HEALTH PREMIUM	RECREATION FUND	NON-DEPARTMENTAL	148.57
	10/31/25	HEALTH PREMIUM	RECREATION FUND	NON-DEPARTMENTAL	232.38
	10/31/25	HEALTH PREMIUM	RECREATION FUND	NON-DEPARTMENTAL	299.30
	10/31/25	HEALTH PREMIUM	RECREATION FUND	NON-DEPARTMENTAL	227.40
	10/31/25	HEALTH PREMIUM	RECREATION FUND	NON-DEPARTMENTAL	227.40
	10/31/25	HEALTH PREMIUM	RECREATION FUND	NON-DEPARTMENTAL	47.73
	10/31/25	HEALTH PREMIUM	RECREATION FUND	NON-DEPARTMENTAL	47.73
	10/31/25	VISION PREMIUM	RECREATION FUND	NON-DEPARTMENTAL	0.98
	10/31/25	VISION PREMIUM	RECREATION FUND	NON-DEPARTMENTAL	0.98
	10/31/25	VISION PREMIUM	RECREATION FUND	NON-DEPARTMENTAL	5.51
	10/31/25	VISION PREMIUM	RECREATION FUND	NON-DEPARTMENTAL	5.51
	10/31/25	VISION PREMIUM	RECREATION FUND	NON-DEPARTMENTAL	13.77
	10/31/25	VISION PREMIUM	RECREATION FUND	NON-DEPARTMENTAL	13.77
	10/31/25	VISION PREMIUM	RECREATION FUND	NON-DEPARTMENTAL	2.59
	10/31/25	VISION PREMIUM	RECREATION FUND	NON-DEPARTMENTAL	2.10
	10/31/25	10/25 PDRMA Health - DG	RECREATION FUND	ADMINISTRATION	20.41
	10/31/25	10/25 PDRMA Health - FH	RECREATION FUND	ADMINISTRATION	45.19
	10/31/25	10/25 PDRMA Health - LN	RECREATION FUND	ADMINISTRATION	20.41
	10/31/25	10/25 PDRMA Health - CQ	RECREATION FUND	ADMINISTRATION	33.31
	10/31/25	10/25 PDRMA Health - SR	RECREATION FUND	ADMINISTRATION	2.05
	10/31/25	10/25 PDRMA Health - LS	RECREATION FUND	ADMINISTRATION	1.38
	10/31/25	10/25 PDRMA Health - KW	RECREATION FUND	ADMINISTRATION	13.60
	10/31/25	EAP PREMIUM	RECREATION FUND	ADMINISTRATION	1.93

VENDOR SORT KEY	DATE	DESCRIPTION	FUND	DEPARTMENT	AMOUNT
	10/31/25	EAP PREMIUM	RECREATION FUND	ADMINISTRATION	1.93
	10/31/25	DENTAL PREMIUM	RECREATION FUND	ADMINISTRATION	22.40
	10/31/25	DENTAL PREMIUM	RECREATION FUND	ADMINISTRATION	22.40
	10/31/25	DENTAL PREMIUM	RECREATION FUND	ADMINISTRATION	10.18
	10/31/25	DENTAL PREMIUM	RECREATION FUND	ADMINISTRATION	10.18
	10/31/25	DENTAL PREMIUM	RECREATION FUND	ADMINISTRATION	5.09
	10/31/25	DENTAL PREMIUM	RECREATION FUND	ADMINISTRATION	5.09
	10/31/25	HEALTH PREMIUM	RECREATION FUND	ADMINISTRATION	275.68
	10/31/25	HEALTH PREMIUM	RECREATION FUND	ADMINISTRATION	275.68
	10/31/25	HEALTH PREMIUM	RECREATION FUND	ADMINISTRATION	131.69
	10/31/25	HEALTH PREMIUM	RECREATION FUND	ADMINISTRATION	131.69
	10/31/25	GROUP LIFE INSURANCE PREMI	RECREATION FUND	ADMINISTRATION	4.25
	10/31/25	GROUP LIFE INSURANCE PREMI	RECREATION FUND	ADMINISTRATION	4.25
	10/31/25	HEALTH PREMIUM	RECREATION FUND	ADMINISTRATION	208.51
	10/31/25	HEALTH PREMIUM	RECREATION FUND	ADMINISTRATION	208.51
	10/31/25	VISION PREMIUM	RECREATION FUND	ADMINISTRATION	3.12
	10/31/25	VISION PREMIUM	RECREATION FUND	ADMINISTRATION	3.12
	10/31/25	VISION PREMIUM	RECREATION FUND	ADMINISTRATION	1.41
	10/31/25	VISION PREMIUM	RECREATION FUND	ADMINISTRATION	1.41
	10/31/25	VISION PREMIUM	RECREATION FUND	ADMINISTRATION	0.71
	10/31/25	VISION PREMIUM	RECREATION FUND	ADMINISTRATION	0.71
	10/31/25	10/25 PDRMA Health - RA	RECREATION FUND	FACILITIES	69.43
	10/31/25	10/25 PDRMA Health - RD	RECREATION FUND	FACILITIES	68.04
	10/31/25	10/25 PDRMA Health - TG	RECREATION FUND	FACILITIES	67.96
	10/31/25	10/25 PDRMA Health - SH	RECREATION FUND	FACILITIES	38.26
	10/31/25	10/25 PDRMA Health - LM	RECREATION FUND	FACILITIES	461.27-
	10/31/25	10/25 PDRMA Health - DW	RECREATION FUND	FACILITIES	34.01
	10/31/25	10/25 PDRMA Health - CW	RECREATION FUND	FACILITIES	67.97
	10/31/25	EAP PREMIUM	RECREATION FUND	FACILITIES	4.58
	10/31/25	EAP PREMIUM	RECREATION FUND	FACILITIES	5.41
	10/31/25	DENTAL PREMIUM	RECREATION FUND	FACILITIES	8.14
	10/31/25	DENTAL PREMIUM	RECREATION FUND	FACILITIES	8.14
	10/31/25	DENTAL PREMIUM	RECREATION FUND	FACILITIES	71.26
	10/31/25	DENTAL PREMIUM	RECREATION FUND	FACILITIES	91.62
	10/31/25	DENTAL PREMIUM	RECREATION FUND	FACILITIES	10.18
	10/31/25	DENTAL PREMIUM	RECREATION FUND	FACILITIES	6.11
	10/31/25	HEALTH PREMIUM	RECREATION FUND	FACILITIES	188.13
	10/31/25	HEALTH PREMIUM	RECREATION FUND	FACILITIES	188.13
	10/31/25	HEALTH PREMIUM	RECREATION FUND	FACILITIES	1,221.94
	10/31/25	HEALTH PREMIUM	RECREATION FUND	FACILITIES	1,221.94
	10/31/25	HEALTH PREMIUM	RECREATION FUND	FACILITIES	344.34
	10/31/25	HEALTH PREMIUM	RECREATION FUND	FACILITIES	206.60
	10/31/25	GROUP LIFE INSURANCE PREMI	RECREATION FUND	FACILITIES	8.06
	10/31/25	GROUP LIFE INSURANCE PREMI	RECREATION FUND	FACILITIES	8.78
	10/31/25	HEALTH PREMIUM	RECREATION FUND	FACILITIES	368.87
	10/31/25	VISION PREMIUM	RECREATION FUND	FACILITIES	1.14
	10/31/25	VISION PREMIUM	RECREATION FUND	FACILITIES	1.14
	10/31/25	VISION PREMIUM	RECREATION FUND	FACILITIES	9.97
	10/31/25	VISION PREMIUM	RECREATION FUND	FACILITIES	12.82
	10/31/25	VISION PREMIUM	RECREATION FUND	FACILITIES	1.42
	10/31/25	VISION PREMIUM	RECREATION FUND	FACILITIES	0.85
	10/31/25	10/25 PDRMA Health - MA	RECREATION FUND	RECREATION	44.33
	10/31/25	10/25 PDRMA Health - MA	RECREATION FUND	RECREATION	20.46
	10/31/25	10/25 PDRMA Health - RARN	RECREATION FUND	RECREATION	6.76
	10/31/25	10/25 PDRMA Health - RB	RECREATION FUND	RECREATION	0.82
	10/31/25	10/25 PDRMA Health - NB	RECREATION FUND	RECREATION	76.91

VENDOR SORT KEY	DATE	DESCRIPTION	FUND	DEPARTMENT	AMOUNT
	10/31/25	10/25 PDRMA Health - SDB	RECREATION FUND	RECREATION	133.04
	10/31/25	10/25 PDRMA Health - AG	RECREATION FUND	RECREATION	229.23
	10/31/25	10/25 PDRMA Health - CH	RECREATION FUND	RECREATION	0.25
	10/31/25	10/25 PDRMA Health - CH	RECREATION FUND	RECREATION	0.18
	10/31/25	10/25 PDRMA Health - AK	RECREATION FUND	RECREATION	68.13
	10/31/25	10/25 PDRMA Health - PK	RECREATION FUND	RECREATION	76.89
	10/31/25	10/25 PDRMA Health - AL	RECREATION FUND	RECREATION	4.31
	10/31/25	10/25 PDRMA Health - JM	RECREATION FUND	RECREATION	68.05
	10/31/25	10/25 PDRMA Health - JREW	RECREATION FUND	RECREATION	150.50
	10/31/25	10/25 PDRMA Health - JRIC	RECREATION FUND	RECREATION	68.01
	10/31/25	10/25 PDRMA Health - KS	RECREATION FUND	RECREATION	0.20
	10/31/25	10/25 PDRMA Health - KS	RECREATION FUND	RECREATION	0.38
	10/31/25	10/25 PDRMA Health - GS	RECREATION FUND	RECREATION	76.95
	10/31/25	10/25 PDRMA Health - CT	RECREATION FUND	RECREATION	67.99
	10/31/25	10/25 PDRMA Health - SWAG	RECREATION FUND	RECREATION	0.58
	10/31/25	EAP PREMIUM	RECREATION FUND	RECREATION	16.63
	10/31/25	EAP PREMIUM	RECREATION FUND	RECREATION	1.00
	10/31/25	EAP PREMIUM	RECREATION FUND	RECREATION	16.59
	10/31/25	EAP PREMIUM	RECREATION FUND	RECREATION	1.04
	10/31/25	DENTAL PREMIUM	RECREATION FUND	RECREATION	176.11
	10/31/25	DENTAL PREMIUM	RECREATION FUND	RECREATION	6.11
	10/31/25	DENTAL PREMIUM	RECREATION FUND	RECREATION	176.11
	10/31/25	DENTAL PREMIUM	RECREATION FUND	RECREATION	6.11
	10/31/25	DENTAL PREMIUM	RECREATION FUND	RECREATION	20.36
	10/31/25	DENTAL PREMIUM	RECREATION FUND	RECREATION	20.36
	10/31/25	DENTAL PREMIUM	RECREATION FUND	RECREATION	61.08
	10/31/25	DENTAL PREMIUM	RECREATION FUND	RECREATION	61.08
	10/31/25	HEALTH PREMIUM	RECREATION FUND	RECREATION	1,599.35
	10/31/25	HEALTH PREMIUM	RECREATION FUND	RECREATION	100.78
	10/31/25	HEALTH PREMIUM	RECREATION FUND	RECREATION	1,599.35
	10/31/25	HEALTH PREMIUM	RECREATION FUND	RECREATION	100.78
	10/31/25	HEALTH PREMIUM	RECREATION FUND	RECREATION	679.31
	10/31/25	HEALTH PREMIUM	RECREATION FUND	RECREATION	679.31
	10/31/25	GROUP LIFE INSURANCE PREMI	RECREATION FUND	RECREATION	30.42
	10/31/25	GROUP LIFE INSURANCE PREMI	RECREATION FUND	RECREATION	2.44
	10/31/25	GROUP LIFE INSURANCE PREMI	RECREATION FUND	RECREATION	30.36
	10/31/25	GROUP LIFE INSURANCE PREMI	RECREATION FUND	RECREATION	2.50
	10/31/25	HEALTH PREMIUM	RECREATION FUND	RECREATION	705.57
	10/31/25	HEALTH PREMIUM	RECREATION FUND	RECREATION	705.57
	10/31/25	HEALTH PREMIUM	RECREATION FUND	RECREATION	1,097.73
	10/31/25	HEALTH PREMIUM	RECREATION FUND	RECREATION	1,097.73
	10/31/25	HEALTH PREMIUM	RECREATION FUND	RECREATION	1,079.96
	10/31/25	HEALTH PREMIUM	RECREATION FUND	RECREATION	1,079.96
	10/31/25	VISION PREMIUM	RECREATION FUND	RECREATION	24.65
	10/31/25	VISION PREMIUM	RECREATION FUND	RECREATION	0.86
	10/31/25	VISION PREMIUM	RECREATION FUND	RECREATION	24.65
	10/31/25	VISION PREMIUM	RECREATION FUND	RECREATION	0.86
	10/31/25	VISION PREMIUM	RECREATION FUND	RECREATION	2.85
	10/31/25	VISION PREMIUM	RECREATION FUND	RECREATION	2.85
	10/31/25	VISION PREMIUM	RECREATION FUND	RECREATION	5.70
	10/31/25	VISION PREMIUM	RECREATION FUND	RECREATION	5.70
	10/31/25	10/25 PDRMA Health - LC	RECREATION FUND	REGISTRATION SERVICES	41.61
	10/31/25	10/25 PDRMA Health - AVK	RECREATION FUND	REGISTRATION SERVICES	0.15
	10/31/25	10/25 PDRMA Health - BS	RECREATION FUND	REGISTRATION SERVICES	23.08
	10/31/25	EAP PREMIUM	RECREATION FUND	REGISTRATION SERVICES	0.93
	10/31/25	EAP PREMIUM	RECREATION FUND	REGISTRATION SERVICES	0.93

VENDOR SORT KEY	DATE	DESCRIPTION	FUND	DEPARTMENT	AMOUNT
	10/31/25	DENTAL PREMIUM	RECREATION FUND	REGISTRATION SERVICES	6.11
	10/31/25	DENTAL PREMIUM	RECREATION FUND	REGISTRATION SERVICES	6.11
	10/31/25	DENTAL PREMIUM	RECREATION FUND	REGISTRATION SERVICES	6.11
	10/31/25	DENTAL PREMIUM	RECREATION FUND	REGISTRATION SERVICES	6.11
	10/31/25	HEALTH PREMIUM	RECREATION FUND	REGISTRATION SERVICES	213.15
	10/31/25	HEALTH PREMIUM	RECREATION FUND	REGISTRATION SERVICES	213.15
	10/31/25	GROUP LIFE INSURANCE PREMI	RECREATION FUND	REGISTRATION SERVICES	1.52
	10/31/25	GROUP LIFE INSURANCE PREMI	RECREATION FUND	REGISTRATION SERVICES	1.52
	10/31/25	HEALTH PREMIUM	RECREATION FUND	REGISTRATION SERVICES	108.00
	10/31/25	HEALTH PREMIUM	RECREATION FUND	REGISTRATION SERVICES	108.00
	10/31/25	VISION PREMIUM	RECREATION FUND	REGISTRATION SERVICES	0.85
	10/31/25	VISION PREMIUM	RECREATION FUND	REGISTRATION SERVICES	0.85
	10/31/25	VISION PREMIUM	RECREATION FUND	REGISTRATION SERVICES	0.85
	10/31/25	VISION PREMIUM	RECREATION FUND	REGISTRATION SERVICES	0.85
	10/31/25	DENTAL PREMIUM	SPECIAL RECREATION	NON-DEPARTMENTAL	1.02
	10/31/25	DENTAL PREMIUM	SPECIAL RECREATION	NON-DEPARTMENTAL	1.02
	10/31/25	HEALTH PREMIUM	SPECIAL RECREATION	NON-DEPARTMENTAL	2.31
	10/31/25	HEALTH PREMIUM	SPECIAL RECREATION	NON-DEPARTMENTAL	2.31
	10/31/25	VISION PREMIUM	SPECIAL RECREATION	NON-DEPARTMENTAL	0.12
	10/31/25	VISION PREMIUM	SPECIAL RECREATION	NON-DEPARTMENTAL	0.12
	10/31/25	10/25 PDRMA Health - MA	SPECIAL RECREATION	SPECIAL RECREATION	3.40
	10/31/25	10/25 PDRMA Health - SR	SPECIAL RECREATION	SPECIAL RECREATION	0.41
	10/31/25	EAP PREMIUM	SPECIAL RECREATION	SPECIAL RECREATION	0.10
	10/31/25	EAP PREMIUM	SPECIAL RECREATION	SPECIAL RECREATION	0.10
	10/31/25	DENTAL PREMIUM	SPECIAL RECREATION	SPECIAL RECREATION	1.02
	10/31/25	DENTAL PREMIUM	SPECIAL RECREATION	SPECIAL RECREATION	1.02
	10/31/25	DENTAL PREMIUM	SPECIAL RECREATION	SPECIAL RECREATION	1.01
	10/31/25	DENTAL PREMIUM	SPECIAL RECREATION	SPECIAL RECREATION	1.01
	10/31/25	HEALTH PREMIUM	SPECIAL RECREATION	SPECIAL RECREATION	16.80
	10/31/25	HEALTH PREMIUM	SPECIAL RECREATION	SPECIAL RECREATION	16.80
	10/31/25	GROUP LIFE INSURANCE PREMI	SPECIAL RECREATION	SPECIAL RECREATION	0.23
	10/31/25	GROUP LIFE INSURANCE PREMI	SPECIAL RECREATION	SPECIAL RECREATION	0.23
	10/31/25	VISION PREMIUM	SPECIAL RECREATION	SPECIAL RECREATION	0.14
	10/31/25	VISION PREMIUM	SPECIAL RECREATION	SPECIAL RECREATION	0.14
	10/31/25	VISION PREMIUM	SPECIAL RECREATION	SPECIAL RECREATION	0.15
	10/31/25	VISION PREMIUM	SPECIAL RECREATION	SPECIAL RECREATION	<u>0.15</u>
				TOTAL:	38,453.68
PEPSI-COLA	10/03/25	Celsius, Gatorade	RECREATION FUND	CONCESSIONS	513.90
	10/10/25	Wat, Gat, CO2, BIBs	RECREATION FUND	CONCESSIONS	980.66
	10/17/25	Water, Gatorade	RECREATION FUND	CONCESSIONS	615.65
	10/24/25	Gat, Water, BIBs, Celsius	RECREATION FUND	CONCESSIONS	382.30
	10/03/25	Soda	RECREATION FUND	RECREATION	<u>117.40</u>
				TOTAL:	2,609.91
PERFORMANCE FOODSERVICE	10/03/25	Meats, Buns, Fries	RECREATION FUND	CONCESSIONS	1,974.07
	10/10/25	Foil Wrap	RECREATION FUND	CONCESSIONS	85.17
	10/10/25	Meats, Buns, Chips, Fries	RECREATION FUND	CONCESSIONS	1,630.86
	10/17/25	Gloves, Bowls	RECREATION FUND	CONCESSIONS	96.75
	10/17/25	Meats, Fries, Buns, Chips	RECREATION FUND	CONCESSIONS	2,029.23
	10/24/25	Food Tray	RECREATION FUND	CONCESSIONS	28.49
	10/24/25	Meats, Buns, Sauces	RECREATION FUND	CONCESSIONS	<u>2,102.08</u>
				TOTAL:	7,946.65
FOX RIVER STUDIO INC	10/10/25	ADULT PAINT SEP 2025	RECREATION FUND	RECREATION	<u>196.00</u>
				TOTAL:	196.00

VENDOR SORT KEY	DATE	DESCRIPTION	FUND	DEPARTMENT	AMOUNT
LRS LLC	10/10/25	PORT-O-LETS-3/19-5/1	CORPORATE FUND	PARKS	289.38
	10/10/25	PORT-O-LETS 3/19-4/3 ADJ	CORPORATE FUND	PARKS	54.63-
	10/10/25	3/18-5/1 PORT-O-LETS	CORPORATE FUND	PARKS	288.88
	10/17/25	5/30-6/26 PORT-O-LETS	CORPORATE FUND	PARKS	170.00
	10/17/25	5/30-6/26 PORT-O-LETS	CORPORATE FUND	PARKS	170.00
	10/17/25	5/30-6/26 PORT-O-LETS	CORPORATE FUND	PARKS	170.00
	10/17/25	5/30-6/26 PORT-O-LETS	CORPORATE FUND	PARKS	170.00
	10/17/25	5/30-6/26 PORT-O-LETS	CORPORATE FUND	PARKS	170.00
	10/17/25	5/30-6/26 PORT-O-LETS	CORPORATE FUND	PARKS	170.00
	10/17/25	5/30-6/26 PORT-O-LETS	CORPORATE FUND	PARKS	170.00
	10/17/25	5/30-6/26 PORT-O-LETS	CORPORATE FUND	PARKS	170.00
	10/10/25	PORT-O-LETS-5/29-7/24	CORPORATE FUND	PARKS	148.93
	10/10/25	PORT-O-LETS-5/29-7/24	CORPORATE FUND	PARKS	148.93
	10/10/25	PORT-O-LETS-5/29-7/24	CORPORATE FUND	PARKS	148.93
	10/10/25	PORT-O-LETS-6/19-6/26	CORPORATE FUND	PARKS	38.57
	10/17/25	7/25-7/30 PORT-O-LETS	CORPORATE FUND	PARKS	36.43
	10/10/25	PORT-O-LETS-6/27-7/14	CORPORATE FUND	PARKS	86.79
	10/10/25	PORT-O-LETS- 8/4-8/21	CORPORATE FUND	PARKS	218.59
	10/03/25	9/19-10/16 PORT-O-LETS	CORPORATE FUND	PARKS	170.00
	10/03/25	9/19-10/16 PORT-O-LETS	CORPORATE FUND	PARKS	170.00
	10/03/25	9/19-10/16 PORT-O-LETS	CORPORATE FUND	PARKS	170.00
	10/03/25	9/19-10/16 PORT-O-LETS	CORPORATE FUND	PARKS	170.00
	10/03/25	9/19-10/16 PORT-O-LETS	CORPORATE FUND	PARKS	170.00
	10/03/25	9/19-10/16 PORT-O-LETS	CORPORATE FUND	PARKS	170.00
	10/03/25	9/19-10/16 PORT-O-LETS	CORPORATE FUND	PARKS	170.00
	10/03/25	9/19-10/16 PORT-O-LETS	CORPORATE FUND	PARKS	170.00
	10/03/25	9/19-10/16 PORT-O-LETS	CORPORATE FUND	PARKS	170.00
	10/03/25	9/19-10/16 PORT-O-LETS	CORPORATE FUND	PARKS	170.00
	10/03/25	9/19-10/16 PORT-O-LETS	CORPORATE FUND	PARKS	340.00
	10/10/25	PORT-O-LETS 6/6-6/9	RECREATION FUND	RECREATION	280.00
	10/10/25	PORT-O-LETS 6/6-6/9	RECREATION FUND	RECREATION	880.00
	10/10/25	PORT-O-LETS 8/14	RECREATION FUND	RECREATION	<u>490.00</u>
			TOTAL:		6,740.80
RESERVE ACCOUNT	10/24/25	Post Meter Refill 10/17	CORPORATE FUND	FINANCE/ADMINISTRATION	<u>800.00</u>
			TOTAL:		800.00
RP RENTS LLC	10/17/25	SCISSOR LIFT	RECREATION FUND	FOUNTAIN VIEW REC CENT	603.04
	10/17/25	BOOM LIFT	RECREATION FUND	FOUNTAIN VIEW REC CENT	<u>1,106.50</u>
			TOTAL:		1,709.54
SCHINDLER ELEVATOR CORP.	10/17/25	ELEVATOR INSPECTION	RECREATION FUND	FOUNTAIN VIEW REC CENT	<u>665.00</u>
			TOTAL:		665.00
MATTHEW SLANKER	10/17/25	REIMBURSEMENT	CORPORATE FUND	PARKS	<u>50.70</u>
			TOTAL:		50.70
CARLY'S KICKERS LLC	10/31/25	SS - Classic -33161	RECREATION FUND	RECREATION	894.00
	10/31/25	SS-Preschool #33696	RECREATION FUND	RECREATION	1,043.00
	10/31/25	Discount 70/30	RECREATION FUND	RECREATION	<u>581.10-</u>
			TOTAL:		1,355.90
FRANCES MYLES	10/03/25	Variety Performer Payment	RECREATION FUND	RECREATION	<u>250.00</u>
			TOTAL:		250.00

VENDOR SORT KEY	DATE	DESCRIPTION	FUND	DEPARTMENT	AMOUNT
ZACH SPEAKER	10/31/25	Payout	RECREATION FUND	RECREATION	<u>200.00</u>
				TOTAL:	200.00
STERLING NETWORK INTEGRATION	10/24/25	9/25 Email Sec/Arch	CORPORATE FUND	FINANCE/ADMINISTRATION	577.50
	10/24/25	9/25 Duo Sec MFA	CORPORATE FUND	FINANCE/ADMINISTRATION	171.00
	10/24/25	9/25 Endpt Security	CORPORATE FUND	FINANCE/ADMINISTRATION	<u>604.20</u>
				TOTAL:	1,352.70
SWEET HOME LAWN MAINTENANCE, INC	10/03/25	MOW/LANDSCAPE 10/25	CORPORATE FUND	PARKS	<u>30,975.00</u>
				TOTAL:	30,975.00
NICK SZARA	10/31/25	Payout	RECREATION FUND	RECREATION	<u>400.00</u>
				TOTAL:	400.00
TOWN & COUNTRY DISTRIBUTORS	10/10/25	Concessions Alcohol	RECREATION FUND	CONCESSIONS	663.80
	10/17/25	Concessions Alcohol	RECREATION FUND	CONCESSIONS	697.00
	10/24/25	Concessions Alcohol	RECREATION FUND	CONCESSIONS	<u>539.00</u>
				TOTAL:	1,899.80
UNIVAR USA INC.	10/17/25	FVRC POOL CHEMICALS	RECREATION FUND	FOUNTAIN VIEW REC CENT	953.63
	10/10/25	FVRC POOL CHEMICALS	RECREATION FUND	FOUNTAIN VIEW REC CENT	<u>1,048.47</u>
				TOTAL:	2,002.10
VILLAGE OF CAROL STREAM	10/24/25	WATER 8/4-9/3	CORPORATE FUND	PARKS	5.28
	10/24/25	WATER 8/4-9/3	CORPORATE FUND	PARKS	53.17
	10/24/25	WATER 8/4-9/3	CORPORATE FUND	PARKS	95.26
	10/24/25	WATER 8/4-9/3	CORPORATE FUND	PARKS	41.57
	10/24/25	WATER 8/4-9/3	CORPORATE FUND	PARKS	5.30
	10/24/25	WATER 8/4-9/3	CORPORATE FUND	PARKS	87.09
	10/24/25	WATER 8/4-9/3	CORPORATE FUND	PARKS	2.34
	10/24/25	WATER 8/4-9/3	CORPORATE FUND	MAINTENANCE FACILITY	62.58
	10/24/25	WATER 8/4-9/3	RECREATION FUND	FOUNTAIN VIEW REC CENT	5,395.05
	10/24/25	WATER 8/4-9/3	RECREATION FUND	SIMKUS FACILITY	176.82
	10/24/25	WATER 8/4-9/3	RECREATION FUND	CORAL COVE	1,591.42
	10/24/25	WATER 8/4-9/3	RECREATION FUND	CORAL COVE	3,282.77
	10/31/25	HYDRANT METER RENTAL	RECREATION FUND	CORAL COVE	25.00
	10/24/25	WATER 8/4-9/3	RECREATION FUND	MCCASLIN FIELDS	202.13
	10/24/25	WATER 8/4-9/3	RECREATION FUND	MCCASLIN FIELDS	1,761.18
	10/24/25	WATER 8/4-9/3	RECREATION FUND	MINIATURE GOLF	<u>17.04</u>
				TOTAL:	12,804.00
WBK ENGINEERING LLC	10/03/25	RH ENG-SETTLEMENT TAAG	CORPORATE FUND	PARKS	<u>1,559.00</u>
				TOTAL:	1,559.00
WDSRA	10/24/25	Inclusion 5/30-8/22/25	SPECIAL RECREATION	SPECIAL RECREATION	<u>91,118.14</u>
				TOTAL:	91,118.14
WEST & SONS TOWING, INC.	10/03/25	TOW FOR REPAIR	CORPORATE FUND	PARKS	<u>175.00</u>
				TOTAL:	175.00
WEST CHICAGO PARK DIST.	10/03/25	CPR First Aid	CORPORATE FUND	REGISTRATION SERVICES	20.00
	10/03/25	CPR First Aid	RECREATION FUND	RECREATION	<u>10.00</u>
				TOTAL:	30.00
WEX BANK	10/24/25	WEX GASOLINE 9/30/25	CORPORATE FUND	PARKS	<u>1,550.07</u>
				TOTAL:	1,550.07

VENDOR SORT KEY	DATE	DESCRIPTION	FUND	DEPARTMENT	AMOUNT
WHEATON PARK DISTRICT	10/24/25	NATURE PLAY DATE	RECREATION FUND	RECREATION	11.20
	10/24/25	DISCOVERY CLUB	RECREATION FUND	RECREATION	11.20
	10/24/25	TOTALLY TURTLES	RECREATION FUND	RECREATION	<u>56.00</u>
	TOTAL:				78.40
YOUNG MANTIS LLC	10/31/25	MINECRAFT CLASS 101325	RECREATION FUND	RECREATION	<u>115.00</u>
	TOTAL:				115.00
YOUNG REMBRANDT'S	10/17/25	ANIME SQUISHMALLOWS	RECREATION FUND	RECREATION	<u>400.00</u>
	TOTAL:				400.00
ZIONS BANK	10/24/25	11/1/25 Bond Payment	BOND AND INTEREST	BOND AND INTEREST	2,130,000.00
	10/24/25	11/1/25 Bond Payment	BOND AND INTEREST	BOND AND INTEREST	2,900.00
	10/24/25	11/1/25 Bond Payment	BOND AND INTEREST	BOND AND INTEREST	243,080.00
	10/24/25	11/1/25 Bond Payment	BOND AND INTEREST	BOND AND INTEREST	1,924,075.00
	10/24/25	11/1/25 Bond Payment	BOND AND INTEREST	BOND AND INTEREST	152,706.75
	10/24/25	11/1/25 Bond Payment	BOND AND INTEREST	BOND AND INTEREST	76,385.75
	10/24/25	11/1/25 Bond Payment	BOND AND INTEREST	BOND AND INTEREST	<u>231,732.50</u>
	TOTAL:				4,760,880.00

===== FUND TOTALS =====

10	CORPORATE FUND	282,800.14
11	CORP REPAIR & REPLACEMENT	339.58
12	REC REPAIR & REPLACEMENT	14,760.50
20	RECREATION FUND	312,886.07
25	SPECIAL RECREATION FUND	91,586.98
30	BOND AND INTEREST FUND	4,760,880.00
32	CAPITAL IMPROVEMENTS FUND	100,302.98
35	CASH IN LIEU	32,282.00

GRAND TOTAL: 5,595,838.25

SELECTION CRITERIA

SELECTION OPTIONS

VENDOR SET: 01-CAROL STREAM PARK DIST.
VENDOR: All
CLASSIFICATION: All
BANK CODE: All
ITEM DATE: 0/00/0000 THRU 99/99/9999
ITEM AMOUNT: 99,999,999.00CR THRU 99,999,999.00
GL POST DATE: 0/00/0000 THRU 99/99/9999
CHECK DATE: 10/01/2025 THRU 10/31/2025

PAYROLL SELECTION

PAYROLL EXPENSES: NO
EXPENSE TYPE: N/A
CHECK DATE: 0/00/0000 THRU 99/99/9999

PRINT OPTIONS

PRINT DATE: Check Date
SEQUENCE: By Vendor Sort
DESCRIPTION: Distribution
GL ACCTS: NO
REPORT TITLE: B O A R D R E P O R T
SIGNATURE LINES: 0

PACKET OPTIONS

INCLUDE REFUNDS: YES
INCLUDE OPEN ITEM:NO

To: Board of Commissioners
From: Renee Bachewicz, Director of Recreation
Date: November 10, 2025
Discussion: Dance, Gymnastics and Theatre Programming

Agenda Item #: 6B

The Recreation Department will present a report on Dance, Gymnastics and Theatre Programming.

To: Board of Commissioners

From: Shane Hamilton, Director of Parks & Facilities

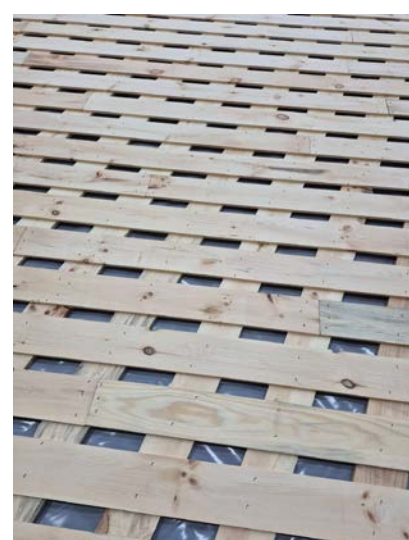
Date: November 10, 2025

Discussion: Simkus Gym Floor Update

Agenda Item #: 6C

Since our last Board of Commissioners meeting on October 27 the following has occurred:

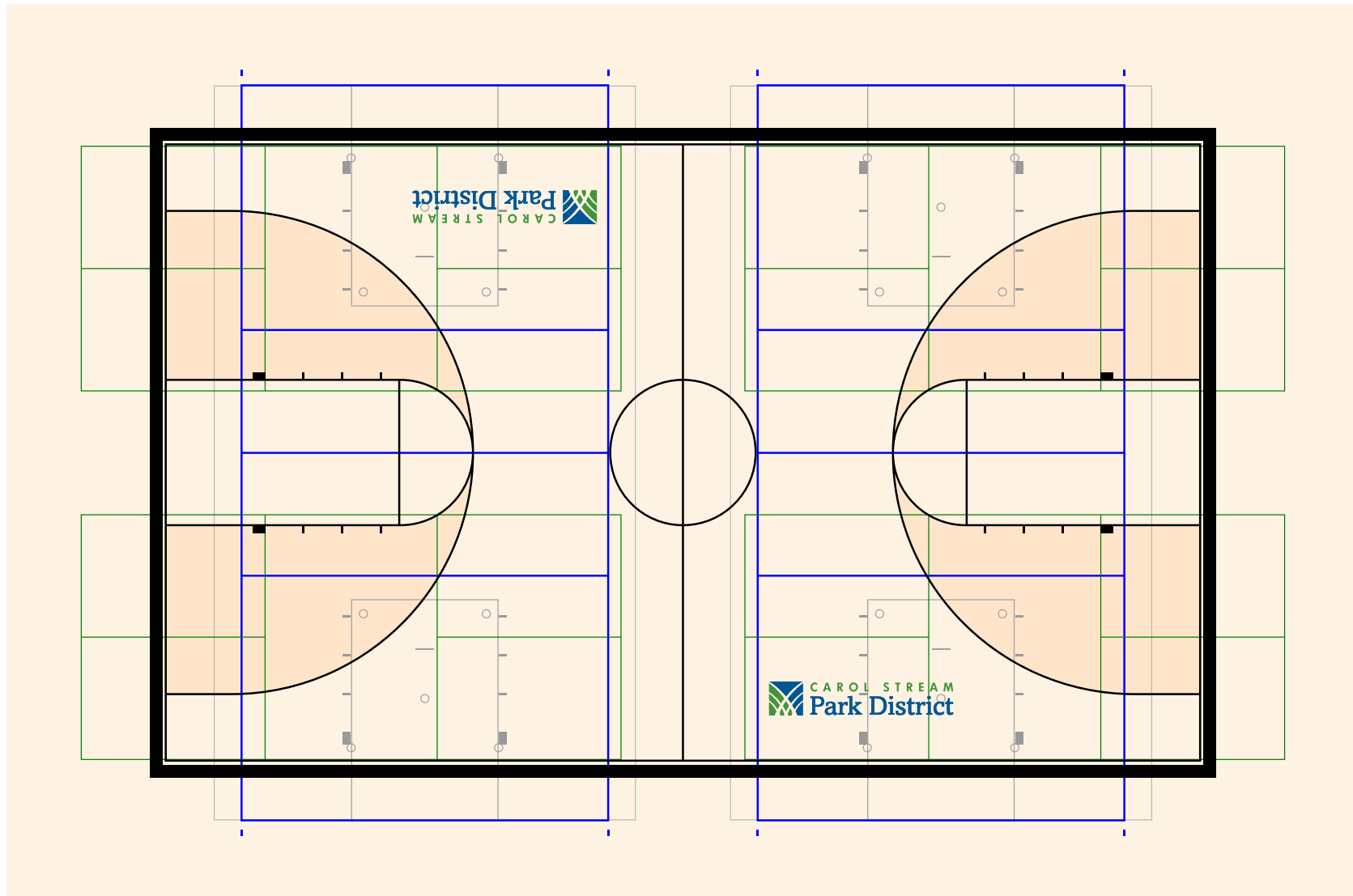
- The contract for the replacement of the gym floor was approved by the Board Of Commissioners on Monday, October 27, with Stalker Sports Courts.
- Stalker Sports Courts began constructing the new floor on Wednesday, October 29. It is estimated the project will take six weeks to complete from start to finish, putting us at December 10, 2025.
- As of Wednesday, November 5, the vapor barrier has been secured, the lattice layered system was installed on top of the vapor barrier, and the wooden floor slats have been laid out and nailed down throughout the entire floor.
- In the coming weeks, Stalker Sports will sand the floor and begin the process of laying out the various lines for various sports utilizing the court (basketball, volleyball, and pickleball).
- After that, Stalker Sports lays out the CSPD logo on the court per the design attached and the process of sealing the floor begins.
- More updates will follow as the project progresses.



Stalker Sports Floors
PO Box 206
New London WI 54961
1-800-831-8773

Simkus Recreation Center
Carol Stream IL

Oct 9, 2025
Gym Layout C



Main Basketball Black 2in
Border 1ft Black (Keep 2in Line)
2 Logos Blue and Green
3 Points Stained Puritan Pine
4 Pickleball Green 2in
2 Volleyball Blue 2in
2 Practice Basketball Gray 1in (34x60)

To: Board of Commissioners
From: Sue Rini, Executive Director
Date: November 10, 2025
Discussion: Special Recreation Inclusion Task Force

Agenda Item #: 6D

I and several members of the WDSRA Board have joined an Inclusion Task Force to look into the significant and increasing cost of inclusion. It has reached a point that it is impacting Districts' ability to utilize Special Recreation dollars for implementation of ADA Transition Plans, pay for accessible equipment in park/facility renovations, and partially fund accessible vehicles. Inclusion costs for 2025 will reach \$176,000 which is a 1,065% increase from 2021's \$15,108 total.

At the Task Force's first meeting we identified the items to be addressed; they include:

1. Frequency and detailed back-up of billing
2. WDSRA's staffing protocols
3. Service to non-residents
4. Protocols for determining inclusion support

1. Frequency and detailed back-up of billing: At last week's meeting we spent a good amount of time discussing billing. The following changes were agreed upon:

- Billing will now be sent to park districts by the 15th of each month instead of on a quarterly basis.
- Billing will now include details to allow for park districts to reconcile the charges to their own record of services. The information will be presented in one report that includes name of individual being served, program attended, and hours worked.
- WDSRA will no longer charge park districts for any mileage reimbursement staff was being paid.

The following items are still to be addressed:

- 24% of individuals receiving inclusion services live outside CSPD boundaries. In other words, we are paying for the inclusion services, but not receiving the taxes.
- WDSRA Staff being paid for actual hours worked versus hours scheduled?
- Who is being charged for 'non-working' time between swim lesson gaps?

Our next task force meeting is on November 20 where we will take up discussions for a solution on non-resident billing, and looking into WDSRA Staffing Protocols.

To: Board of Commissioners

From: Lisa Scumaci, Director of Finance & IT

Date: November 10, 2025

Discussion: Capital Improvement Plan – Third Quarter 2025

Agenda Item# 6E

Staff has prepared a more consolidated Quarterly Capital Improvement Plan report to reflect the plans discussed over the last several months. We hope it presents a clearer list of capital projects as well as the funds available for capital expenditures.

The projects planned and **funded** are broken down into several categories of maintenance type items, and capital projects:

- Vehicles/Equipment Replacements 2026-2028
- Facility Renovations/Updates
- Park & Playground Replacements
- Emergency Repair/Replacements
- IGA Commitments
- Projects being completed in the current fiscal year
- Capital Projects which are on hold due to lack of funding

The **unfunded** projects were those previously ranked by the Board as a priority, or are considered maintenance items that need to be addressed in the next several years

Capital Fund Budget Balance:

The current balance of the District's Self-Funded Capital Improvement Fund: (\$ 185,012)

- Balance was impacted by lack of Special Recreation money to reimburse capital projects.
- Balance will be impacted as outstanding grant reimbursements are received.

The expected balance of the 2025 Bond Issue Capital Improvement Fund: \$1,500,000



Capital Repair/Replacement & Maintenance Plans 2025-2028

Vehicle/Equipment Replacements		
Year	Item	Cost
2026	39 Passenger Bus	275,000
	Small Gator	12,000
	Turf Aerator Replacement	21,200
2027	Replace 2012 F250 Pickup #1	57,500
	Replace 2012 Ford Explorer	45,000
	Replace 2007 Econoline Van #1	65,300
2028	Replace 2012 F250 Pickup #2	57,500
	Replace 2011 Econoline Van #2	65,300
		598,800
Facility Renovations/Updates		
Year	Item	Cost
2026	FVF Member Locker Room Shower Floor	24,500
	FVF Member Locker Room Wallpaper/Paint	18,800
	Replace 5 CCWP Concession Tables	8,500
2027	Replace 5 CCWP Concession Tables	8,500
2028	Replace 5 CCWP Concession Tables	8,500
		68,800
TBD	2025 Capital Improvement Dollars	1,500,000
9/30/25	Self-Funded Capital Improvement Dollars	(185,012)

2025 In-Process/Completed Projects		
Year	Item	Cost
2025	Armstrong Lot Reseal/Stripe	26,120
2025	Bierman Shoreline Repair	19,269
2025	CCMG Water Service Conversion	46,626
2025	CCWP Bucket Feature Painting/Netting Replacement	39,175
2025	Evergreen 2024 Floor Replacement 50%	59,750
2025	Evergreen 2024 Masonry 50%	28,375
2025	Pleasant Hill Park Renovation	303,200
2025	SRC Gym Floor Repair/Refinish 24-25	63,605
		586,120

NOTES:

Italicized items are funded by 2025 Capital Improvement Bond Issue
 Purple items pending quotes
 Vehicle listing is not the full fleet list
 Evergreen Lakes Shoreline Project Total is \$300,000

Park & Playground Replacements		
Year	Item	Cost
2026	Appomattox Park	185,000
2026	Armstrong Park Hub Renovation	300,000
		485,000
Capital/Emergency Repair/Replacements-UNBUDGETED		
Year	Item	Cost
2025	SRC Gym Floor/Electric/CCWP Leak	325,000
		325,000
IGA Commitments		
Year	Item	Cost
2026	Evergreen Gym 2025 Doors 50%	35,035
2026	Evergreen Gym 2025 Water Fountain 50%	1,275
2026	Evergreen Gym 2025 Walkway Light 50%	1,105
2026	Evergreen Gym 2025 Parking Lot 50%	2,400
		39,815
Combined Total-All Except Unfunded Projects:		1,517,415

Capital Projects-UNFUNDED		
Year	Item	Cost
TBD	FVRC Fitness Floor Replacement ESTIMATE	85,000
TBD	SRC Locker Room/Restrooms ESTIMATE	75,000
TBD	Evergreen Lakes Shoreline Phs 1 ESTIMATE	75,000
TBD	Armstrong Pickleball Shade/Expansion ESTIMATE	55,000
TBD	McCasin Batting Cages ESTIMATE	40,000
TBD	Evergreen Lakes Shoreline Remaining Areas	225,000
2026	SRC HVAC System Analysis-Pending Quote	
TBD	SRC HVAC System Replacement-Pending Quote	

To: Board of Commissioners

From: Senior Leadership Team

Date: November 10, 2025

Discussion: Proposed Organizational Goals for 2026 **Agenda Item #: 6F**

Staff has compiled a list of goals based on top priorities of the newly prepared Strategic Plan for 2026-2028. Some goals will require funding and therefore this year's work will consist of fact finding, budget estimates, and determining funding sources. *The ORGANIZATIONAL GOALS will also be listed within the Department Goals for the team/director leading the project.*

Staff seeks Board feedback and will finalize these goals for approval at the next Board Meeting, and again as part of the adoption of the 2026 Budget.

PROPOSED ORGANIZATIONAL GOALS FOR 2026

- Distinguish CSPD as a community leader.
- Explore options for lighted fields and artificial turf.
- Seek grant opportunities to offset expenses for operating or capital expenses.
- Review Park District Staffing Levels.
- Create a comprehensive IT Replacement Plan to maximize efficiency.
- Develop a structured Communication Plan to effectively engage external partners, customers, and stakeholders.
- Complete Appomattox Park renovation to deliver an updated play environment to our community.
- Complete renovation of Armstrong Park ball fields and hub.
- Evaluate Safety Needs at all Park District Facilities.

Organizational and Departmental Goals:

Administration:

- Distinguish CSPD as a community leader.
 - ✓ Strengthen partnerships with local governments.
 - ✓ Explore opportunities for new or expanded partnerships that provide for connection amongst all ages, abilities and cultures.
- Explore options for lighted fields and artificial turf.
 - ✓ Use creative methods for funding including grants and partnerships.
- Evaluate acquisition of Papoose Park from Village of Carol Stream.

Finance

- ✓ Remain Financially Sustainable
 - ✓ Work with District's bank to maximize investments and interest earnings.

- Provide financial funding recommendations for the implementation of the Capital Improvement Plan.
 - ✓ Use of operational repair and replacement, or capital funds.
- Seek grant opportunities to offset expenses for operating or capital expenses.
 - ✓ Consider non-traditional grant and funding opportunities.

Human Resources & Administrative Services

- Review Park District Staffing Levels.
 - ✓ Explore consultants and tools that can assess current staffing levels and make recommendations.
 - ✓ Successfully implement a new HRIS module to Incode. Improve reports, application tracking, paperwork processing, scheduling and time and attendance features.
 - ✓ Eliminate duplicate systems and reduce operating costs.
- Create Staff Retention Program/Plan.
 - ✓ Assess success of current staff recognition programs and activities to identify opportunities for improvement.
 - ✓ Develop new initiatives to increase staff retention and satisfaction and promote a healthy, positive work environment.
- Expand professional development opportunities to facilitate long-term succession plans and to support staff retention.

Information Technology

- Create a comprehensive IT Replacement Plan to maximize efficiency.
 - ✓ Update network and workstation inventories.
 - ✓ Update peripheral inventories, including monitors, laser printers, receipt printers, data card printers, workstation cameras, keyboards, etc.
 - ✓ Determine items and quantity that should be in stock for critical replacements.
- Inventory all software systems.
 - ✓ Include software lifespan and upgrade needs.
 - ✓ Include maintenance schedules and any amenities to be suggested to improve efficiency.
- Complete Windows 11 conversion by end of 2027.

Marketing

- Develop a structured Communication Plan to effectively engage external partners, customers, and stakeholders.
- Assess and determine social media platforms, electronic communications.
 - ✓ Evaluation of benefit of unique pages.
 - ✓ Types of Platforms.

- Expand marketing and outreach to connect with non-users and bring users to facilities, and address language barriers.

Parks & Facilities

- Evaluate renovation and improvement needs for Simkus Recreation Center.
 - ✓ Design an upgraded HVAC System
- Create a safety program specific to tasks and duties of the Facility staff
 - ✓ Example: roof inspection training
- Explore conversion of three landscape areas at the FVRC Entrance into community-based art installations.
 - ✓ Complete Appomattox Park renovation to deliver an updated play environment to our community.
 - ✓ Complete renovation of Armstrong Park ball fields and hub.
- Increase quality of Park District athletic fields.
- Create a monthly blog for Parks & Facilities that reaches the public describing what the department accomplishes.
- Create community outreach boards at strategic locations throughout park system
 - ✓ Help to distinguish the District as a community leader.
- Utilize technology throughout Parks & Facilities for internal playground and facility inspections to maximize efficiency.

Recreation

- Elevate the overall quality of programs and special events by integrating emerging trends and/or updating current operations and analyzing competitors.
- Expand access to programming and facilities in the underserved areas of the community.
- Expand professional development opportunities to facilitate long-term succession plans and to support staff retention.
- Enhance training and development for part-time staff and volunteer coaches.

Risk Management

- Evaluate Safety Needs at all Park District Facilities.
 - ✓ Conduct assessments of each facility and create a master plan that includes a suggested budget and timeline.
- Develop a comprehensive safety training plan and annual training calendar.

To: Board of Commissioners
From: Lisa Scumaci, Director of Finance & IT
Date: November 10, 2025
Approval: Resolution 25-07 Estimation of Funds to be Raised by
Taxation for the Year 2025 **Agenda Item # 7A**

Issue: Should the Board approve Resolution 25-07 determining funds estimated to be raised by taxation for the year 2025, in order to comply with the truth in taxation requirements and to publish the attached public notice of the upcoming public hearing on the levy ordinance.

Background/Reasoning

- Illinois statute dictates the procedures under which the Park District should levy for taxes. When the estimation of funds to be raised by taxation reflects an increase of over 5% over the aggregate levy of the prior year, a public hearing must be held. If the increase is less than 5% the law does not require publication or public hearing.
- Additionally, PTELL (Property Tax Extension Limitation Law) creates a limiting rate which controls the increases in taxes due to changes in EAV from year to year; new growth is exempt from PTELL.
- The estimated 2025 aggregate levy will be ballooned by 5% in order to capture any new growth that may be unknown at the time of the preparation of this levy. At the time of this resolution, we only have estimated new growth figures from our reporting townships.
- Capturing new growth has a compounding effect on future tax receipts. New growth warrants consideration of the statutory permission to balloon the levy to 105% of last year's aggregate. Because multiple new subdivisions will be starting construction, as early as late 2024, we want to capture as much new growth as possible.
- Bloomingdale, Milton and Wayne Townships have provided us estimates for new growth and reassessments for a combined EAV increase of 9.62%, along with CPI at 2.9%.
- In reviewing the public notice the numbers can be very deceiving. We are not asking to increase taxes by 5%, but the required statutory language requires the information to be posted this way.
 - Public Notice Item II: compares the 2024 *final* extended taxes for corporate and special purpose (the actual, non-ballooned taxes received last year) to the *estimated* 2025 extended taxes for corporate and special purpose to be levied (which in addition to being estimated are ballooned to facilitate capturing of new

growth.) We are not comparing actual to actual. These numbers are where the 10.09% (\$543,575) increase comes in. Again, keep in mind that Aggregate Dollars we are estimating this year have been ballooned by 5%. The real aggregate dollars we estimate getting will only be about 5.60% (\$301,387) higher than last year. In comparison, the non-ballooned aggregate estimate of 4.99% would show an increase of \$268,716 compared to last year.

- Public Notice Item III: compares the extended taxes for debt service in 2024 to the levied debt service taxes for 2025. The debt service increase is directly related to the change in bond schedule payments.
- Public Notice Item IV: compares the extended and abated taxes for 2024 to the *estimated* levy dollars for 2025.
- The actual non-ballooned tax rate estimate is .5536 compared to last year's final tax rate of .5964. This estimated decrease in the overall tax rate for the District is primarily related to the increasing EAVs.

Supporting Documents:

- Resolution 25-07

Cost:

N/A

Public/Customer Impact:

N/A

Recommendation

That the Board make a motion to approve Resolution 25-07 determining funds estimated to be raised by taxation for the year 2025, in order to comply with the truth in taxation requirements and to publish the attached public notice of the upcoming public hearing on the levy ordinance.

**RESOLUTION 25-07
CAROL STREAM PARK DISTRICT**

**Resolution Determining Funds Estimated
To Be Raised by Taxation for the Year 2025**

WHEREAS, Illinois law requires that all taxing districts shall, not less than 20 days prior to the adoption of its aggregate levy, determine the amounts of money estimated to be necessary to be raised by taxation for that year upon the taxable property in such taxing district.

THEREFORE, BE IT HEREBY RESOLVED, by the board of park commissioners of the Carol Stream Park District, as follows:

Section 1: That this park board hereby determines the amounts of money estimated to be necessary to be raised by taxation for the year 2025 upon the taxable property of this park district to be the sum of **\$11,905,376**.

Section 2: That since it appears that the amounts of money estimated to be raised by taxation for the year 2025 are more than 105% of the amount of taxes extended or estimated to be extended upon the levy of this park district for the year 2024, the secretary is hereby directed on behalf of this park board, to give the attached public notice of a public hearing on this park board's intent to adopt a levy in an amount which is more than 105% of the extensions for the year 2024, all as required by law.

Passed and approved this 10th day of November 2025

President of Said Park Board

ATTEST:

Secretary of Said Park Board

NOTICE

A Notice of Proposed Property Tax Increase for the Carol Stream Park District

- I. A public hearing to approve a proposed property tax levy increase for the Carol Stream Park District for 2025 will be held on **December 8, 2025** at 6:00 p.m. at Fountain View Recreation Center, 910 N. Gary Avenue, Carol Stream.

Any person desiring to appear at the public hearing and present testimony to the taxing district may contact Sue Rini, board secretary, 849 W. Lies Road, Carol Stream, IL at (630) 784-6100.

- II. The corporate and special purpose property taxes extended or abated for **2024 were \$5,385,077.**

The proposed corporate and special purpose property taxes to be levied for **2025 are \$5,928,652.** This represents a **10.09% increase** over the previous year.

- III. The property taxes extended for the debt service and public building commission leases for **2024 were \$6,036,591.13.**

The estimated property taxes to be levied for debt service and public building commission leases for **2025 are \$5,976,723.75.** This represents a **0.99% decrease** over the previous year.

- IV. The total property taxes extended or abated for **2024 were \$11,462,027.86.** The estimated total property taxes to be levied for **2025 are \$11,905,375.75.** This represents a **3.87% increase** over the previous year.